

CHURCHILL DOWNS

Louisville, Kentucky

(Length of stretch from last turn to finish, 1,234½ feet.)

Puett Starting Gate. Photo Trackmaster. Daily Doubles, first and second races; last two races. Exactas, second and fourth through last races. Pick-Three, sixth, seventh and eighth races. Pick-Six, third through eighth races. Entries and field horses run as one in Daily Double and Exacta races.

TRACK RECORDS AT CHURCHILL DOWNS

DISTANCE	HORSE	AGE	WGT.	TIME	DATE
4 Furs.	Fair Phantom	(2)	114	:46½	May 7, 1921
4½ Furs.	Wodicum	(2)	118	:51½	May 6, 1983
5 Furs.	Santiago Road	(2)	125	:57½	May 18, 1968
5½ Furs.	Golden Derby	(2)	125	1:04½	June 28, 1980
6 Furs.	Big Pistol	(5)	115	1:08½	June 1, 1986
6½ Furs.	Dogoon	(5)	121	1:16	Nov. 5, 1957
7 Furs.	Rapid Gray	(6)	122	1:21½	June 29, 1985
7½ Furs.	Aurecolt	(3)	122	1:29	Nov. 12, 1957
1 Mile	Evasive Action	(2)	116	1:33½	Nov. 15, 1969
1 Mile 20 Yds.	Frog Legs	(4)	107	1:39	May 13, 1913
1 Mile 50 Yds.	Hodge	(5)	120	1:41½	Oct. 4, 1916
1 Mile 70 Yds.	The Porter	(4)	110	1:41½	May 30, 1919
1 Mile 100 Yds.	The Caxton	(4)	101	1:49½	May 16, 1902
1¼ Miles	Yes Sir	(5)	110	1:41½	Nov. 25, 1970
1½ Miles	Las Olas	(4)	111	1:48½	Nov. 21, 1958
1¾ Miles	Bonnie Andrew	(5)	110	1:58½	Nov. 14, 1942
1¾ Miles	Secretariat	(3)	126	1:59½	May 5, 1973
1¾ Miles	Elliott	(6)	109	2:20½	Oct. 15, 1906
1½ Miles	Perturbed	(5)	112	2:32½	Oct. 3, 1958
1½ Miles	Tupolev	(5)	112	2:49½	July 23, 1983
1½ Miles	The Messenger	(7)	117	3:01½	Nov. 17, 1984
2 Miles	Bit Of White	(3)	115	3:22½	Oct. 22, 1921
2¼ Miles	Hi Neighbor	(8)	117	3:40½	Nov. 11, 1949
2½ Miles	Raincoat	(3)	090	3:53	Oct. 7, 1915
3 Miles	Ten Broeck	(4)	104	5:26½	Sept. 3, 1976
4 Miles	Sotemia	(5)	119	7:10½	Oct. 7, 1912

TURF COURSE					
1 Mile	Thunderdome	(4)	119	1:37½	May 9, 1987
1¼ Miles	Rio's Lark	(4)	114	1:43½	May 21, 1988
1½ Miles	Manila	(4)	120	1:48½	May 1, 1987

For purposes of comparison with the track records, the following list shows the best time for each distance run at this track in the calendar year 1987: 4½ f :52½; 5 f :58½; 5½ f 1:05½; 6 f 1:09½; 6½ f 1:16½; 7 f 1:22; 7½ f 1:32½; 1 m 1:35½; 1¼ m 1:42½; 1½ m 1:50; 1¾ m 2:03½; 2 m 2:34½; 2¼ m 3:29½; 1 m turf 1:37½; 1¼ m turf 1:45½; 1½ m turf 1:48½.

CHURCHILL DOWNS speed ratings are based on track records in effect prior to the opening of this meeting, October 30, 1988.

* Fair Mud Runner X Good Mud Runner ⊕ Superior Mud Runner

Past Performances Listed According to Post Position

1st Churchill

1 MILE. (1.33%) 7th Running **IROQUOIS STAKES ALLOWANCE.** \$50,000 Added. 2-year-olds. By subscription of \$50 each, which should accompany the nomination, \$250 to pass the entry box, \$250 additional to start, with \$50,000 added, of which 65% of all monies to the owner of the winner, 20% to second, 10% to third and 5% to fourth. Weight, 121 lbs. Non-winners of \$30,000 allowed 3 lbs.; \$16,250, 5 lbs.; two races other than claiming, 7 lbs.; a race other than claiming, 9 lbs. If the race is divided, it will be drawn in accordance with the rules of racing. In the event that this race is not divided, the field will be limited to fourteen (14) starters with as many as four (4) horses placed on the also eligible list. If more than fourteen (14) entries pass the entry box preference will be given to highweights with consideration to the sex allowance, however two horses having common ties through ownership cannot start to the exclusion of a single interest. Any horse excluded from running because of the aforementioned preference shall be refunded the entry fee. Starters to be named through the entry box at the usual time of closing. A trophy to the winning owner. Highweights preferred with consideration to the sex allowance. (Closed with 33 nominations.)

Andover Man
NO RIDER
 Own.—Asbury T
 25Oct88-4Kee 1¼ :50 1:15 1:47ft 9-5 114
 14Oct88-3Kee 6f :23 :46 1:11ft *1e121 22 1st 13 13
 Oct 13 Kee 3f :37 bg Oct 8 Kee 4f :48 bg Oct 2 Kee 5f 1:03 b Sep 26 Kee 5f 1:04 b

B. c. 2, by Mr Redoy—Gronas, by Groton
 Br.—ForestRetretFrms,Incorpordt (Ky) 1988 2 2 0 0 \$26,390
 Tr.—Arnold George R II
 Lifetime 2 2 0 0 \$26,390

Shredding Party
BRUIN J E
 Own.—Jackey E
 11Oct88-8Kee a7f 1:27ft 24 112
 9Sep88-8TP 6f :22 1:44 1:43ft 12 112
 33Sep88-7RD 5½f :23 1:47 1:06sy 21 119
 23Jun88-4CD 5½f :23 :47 1:07ft 8e120
 9Jun88-4CD 5f :23 1:47 1:00gd 19 121
 19May88-4CD 5f :23 1:47 :59ft 3½ 121
 Sep 20 TP 5f 1:03 h

Gr. g. 2, by Drone—Bids and Blades, by Blade
 Br.—Gallagher Mrs James H (Ky) 1988 6 2 1 1 \$20,217
 Tr.—Castelluccio Frank
 Lifetime 6 2 1 1 \$20,217

Color War
STEVENS G L
 Own.—Allen J
 21Oct88-5Kee a7f 1:28½sy *4-5 120
 10Oct88-10TP 1¼ :47 1:13 1:44ft 7 120
 16Sep88-7Bel 7f :23 1:47 1:25 ft 4½ 118
 Oct 12 CD 4f :51 b Sep 9 Bel 4f :48 b

Dk. b. or br. c. 2, by Far Out East—Numerical, by Turn and Count
 Br.—Seeheim Farms Inc (Ont-C) 1988 3 2 0 0 \$26,100
 Tr.—Lukas D Wayne
 Lifetime 3 2 0 0 \$26,100

Dansil
NO RIDER
 Own.—Franks John
 22Oct88-10LaD 1¼ :47 1:24 1:45ft *0-5 118
 9Oct88-10LaD 7f :22 1:44 1:24ft 3½e121
 21Sep88-9LaD 7f :22 :45 1:26 ft 6½ 114
 21Sep88—Bumped force back
 1Sep88-1LaD 6f :22 :46 1:12 ft *1-3 119
 20Aug88-10LaD 6f :22 :45 1:13 ft *6-5 116
 420Aug88—Dead heat
 3Aug88-1LaD 5½f :22 1:45 1:04ft *6-5 118
 24July88-4LaD 5½f :22 :46 1:06ft 4½ 118
 Nov 1 CD 5f 1:04 b Oct 17 LaD 1f 1:41 b

B. c. 2, by Silver Hawk—Upper Dancer, by Upper Nile
 Br.—Jones Brereton C (Ky) 1988 7 3 3 0 \$88,129
 Tr.—Brothers Frank L
 Lifetime 7 3 3 0 \$88,129

Ridge Escape
NO RIDER
 Own.—Fares Farm Inc
 25Oct88-5Kee 1¼ :49 1:14 1:46ft *4-5 112
 30Sep88-6TP 1¼ :47 1:12 1:45ft *4-5 114
 17Sep88-1TP 1¼ :47 1:13 1:47ft 7½ 120
 16Aug88-1Mth 6f :22 1:46 1:12ft 13 118
 Nov 3 CD 3f :37 b Oct 23 Kee 3f 3d :36 b Oct 17 Kee 5f 1:04 b Oct 12 Kee 4f :48 b

B. c. 2, by Cox's Ridge—Bold Escape, by Bold Forbes
 Br.—S B Syndicate (Ky) 1988 4 3 0 0 \$31,815
 Tr.—Hauswald Philip
 Lifetime 4 3 0 0 \$31,815

Alphabetical Index to Entries

CHURCHILL DOWNS

A	Affirmed Classic, 5 CD Afleet, 4 CD Alysheba, 10 CD Andoyer Man, 1 CD Approved to Fly, 5 CD Ataentsic, 2 CD Atlatl, 3 CD	B	Beauty Cream, 3 CD Bet Twice, 7 CD Blushing John, 7 CD Bright Timing, 3 CD	C	Calestoga, 4 CD Castle Lass, 2 CD Charming Tigress, 3 GD Chez Chez Chez, 3 CD Classic Crown, 6 CD Coax Chelsie, 5 CD Color War, 1 CD Countess Midori, 2 CD Cryptoclearance, 10 CD Cutlass-Reality, 10 CD	D	Dansil, 1 CD Darby Shuffle, 5 CD Double Quick, 8 CD Double The Charm, 3 CD Dr. Bizarre, 8 CD	E	Easy Goer, 8 CD El Senor, 9 CD Eloquent Minister, 5 CD Epitome, 6 CD Fieldy, 3 CD	F	Fajar Tango, 9 CD Forty Niner, 10 CD Frankly Perfect, 9 CD Fraulein Lieber, 3 CD	G	Goodbye Halo, 6 CD Graceful Darby, 3 CD Great Communicator, 9 CD Gulch, 4 CD	H	Hail a Cab, 6 CD High Brite, 4 CD	I	Indian Skimmer, 9 CD Infamy, 9 CD Integra, 6 CD Into Bucks, 8 CD Irish Nymph, 2 CD Is It True, 8 CD	J	Jonowo, 3 CD	K	Lanbeedue, 1 CD Le L'Argent, 2 CD Lea Lucinda, 5 CD Leading Prospect, 8 CD Little Brianne, 2 CD Littlebitapleasure, 2 CD Lively One, 10 CD Lorenzoni, 1 CD	L	Maharesred, 8 CD Marshesseaux, 2 CD Master Christopher, 7 CD Mawsuff, 4 CD	M	Medieval Decoy, 2 CD Miesque, 7 CD Milesius, 9 CD Mill Native, 7 CD Mining, 4 CD Miss Alto, 3 CD Mohamed Abdu, 7 CD Mountain Ghost, 8 CD Music Merci, 8 CD	N	Niccolo Polo, 7 CD Noble Links, 3 CD	O	Olympic Prospect, 4 CD Once Wild, 4 CD One Of A Klein, 5 CD Open Mind, 5 CD	P	Personal Ensign, 6 CD Personal Flag, 10 CD Play The King, 4 CD Popularity, 3 CD Posen, 7 CD Precisionist, 4 CD	R	Raging Lady, 2 CD Ravinella, 7 CD Ready Jet Go, 4 CD Ridge Escape, 1 CD Ruhlmann, 4 CD	S	Saint Andrews, 9 CD Sarhoob, 9 CD Savannah's Honor, 3 CD Seaquay, 5 CD Seattle Meteor, 5 CD	T	Tagel, 8 CD Token Gift, 3 CD Top Corsage, 3 CD Triptych, 9 CD	U	Undercut, 9 CD	V	Very Subtle, 4 CD	W	Waquoit, 10 CD Warning, 7 CD Western Playboy, 1 CD Willa on the Move, 6 CD Winning Colors, 6 CD	Y	You're No Bargain, 4 CD	Z	Zadracarta, 2 CD	Seeking the Gold, 10 CD Sham Say, 6 CD Shredding Party, 1 CD Simply Majestic, 7 CD Slew City Slew, 10 CD Some Romance, 5 CD Spanish Jade, 1 CD Steinlen, 7 CD Stocks Up, 5 CD Sunshine Forever, 9 CD Sylvan Express, 4 CD
----------	--	----------	---	----------	---	----------	--	----------	---	----------	---	----------	---	----------	--------------------------------------	----------	--	----------	--------------	----------	---	----------	---	----------	--	----------	---	----------	--	----------	---	----------	--	----------	---	----------	--	----------	----------------	----------	-------------------	----------	---	----------	-------------------------	----------	------------------	--

Lanbeedue
NO RIDER
 Own.—Brock M & Bettersworth J R
 22Oct88-3Kee 6f :22 1:13m 10 118
 22Oct88—Placed first through disqualification
 12Oct88-3Kee 7f :23 :46 1:24ft 6½ 119
 4Sep88-9EIP 6f :22 :45 1:10 ft 9½ 112
 28Aug88-7EIP 6f :23 :47 1:13sy 2½ 120

B. c. 2, by Copelan—Bee Diligent, by Due Diligence
 Br.—Bettersworth J R (Ky) 1988 4 1 0 2 \$14,190
 Tr.—Lessor Renee
 Lifetime 4 1 0 2 \$14,190

Spanish Jade
VASQUEZ J
 Own.—Schuchard P&ChurchmanJr
 18Oct88-3Kee 1¼ :49 1:14 1:47 ft *4-5 118
 8Oct88-2Kee a7f 1:28ft 6½ 118
 24Aug88-8RD 1 :47 1:12 1:39 ft 3½ 113
 14Aug88-5EIP 6f :22 :46 1:12ft 3½ 120
 26July88-6EIP 5½f :23 :46 1:05m *3½ 119
 26Jun88-5CD 5½f :22 :46 1:05ft 16 118
 5Jun88-4CD 5f :23 :46 1:05 ft 4½ 121
 30May88-9CD 5½f :22 :46 1:04ft 9½ 112
 27Apr88-3Kee 4½f :22 :45 1:03 ft 12 118

Gr. c. 2, by Spanish Drums—Outstanding Jade, by Distinctive
 Br.—Babcock Shirley N (Ky) 1988 9 1 2 3 \$24,172
 Tr.—Churchman John E Jr
 Lifetime 9 1 2 3 \$24,172

Lorenzoni
ROMERO R P
 Own.—Hayward Julie
 20Oct88-8Kee 1¼ :47 1:12 1:45ft 3 121
 20Oct88—Grade II
 11Oct88-5Kee 1¼ :48 1:13 1:45ft *3-5 120
 24Sep88-9Med 1 :46 1:11 1:35ft 13e114
 17Aug88-8Sar 6f :22 :45 1:10 ft 29 115

B. c. 2, by Clever Trick—Careless Kitten, by Caro
 Br.—Glencrest Farm (Ky) 1988 8 2 1 2 \$78,110
 Tr.—Schulhofer Flint S
 Lifetime 8 2 1 2 \$78,110

Western Playboy
DAY P
 Own.—Vanier Nancy A
 20Oct88-2Kee 7f :23 1:46 1:24ft *1 119
 Nov 3 CD 5f 1:03 b

Ch. c. 2, by Play Fellow—Westward Hope, by Daniel Boone
 Br.—Vanier Mr & Mrs Harvey L (Ill) 1988 1 1 0 0 \$10,400
 Tr.—Vanier Harvey L
 Lifetime 1 1 0 0 \$10,400

Churchill Downs Medication list

Information regarding horses on or off controlled medication programs for furosemide is supplied to Daily Racing Form by state and/or track officials responsible for the administration of said programs. The following list was made available by press time for the racing of:

November 5, 1988
PHENYLBUTAZONE

- 1—Andover Man, Shredding Party, Color War, Dansil, Ridge Escape, Lanbeedue, Spanish Jade, Lorenzoni.
- 2—Marshesseaux, Le L'Argent, Medieval Decoy, Irish Nymph, Little Brianne, Countess Midori, Littlebitapleasure, Ataentsic, Castle Lass, Zadracarta, Raging Lady.
- 3—Popularity, Top Corsage, Beauty Cream, Noble Links, Atlatl, Fraulein Lieber, Miss Alto, Fieldy, Chez Chez, Jonowo, Double the Charm, Bright Timing, Charming Tigress.
- 4—Very Subtle, Afleet, Once Wild, Ready Jet Go, Precisionist, Calestoga, High Brite, Sylvan Express, Gulch, Olympic Prospect, Mining, You'r No Bargain.
- 5—Approved to Fly, Darby Shuffle, Lea Lucinda, Eloquent Minister, Coax Chelsie, Stocks Up, Open Mind, Some Romance, One of a Klein.
- 6—Epitome, Sham Say, Hail a Cab, Willa on the Move, Integra, Winning Colors, Classic Crown.
- 7—Steinlen, Simply Majestic,

- Mohamed Abdu, Miesque, Niccolo Polo, Mill Native, Master Christopher.
 8—Is It True, Double Quick, Maharesred, Dr. Bizarre, Leading Prospect, Music Merci, Into Bucke, Easy Goer, Mountain Ghost.
 9—Great Communicator, Frankly Perfect, Triptych, Fajar Tango, Milesius, Sarhoob.
 10—Waquoit, Slew City Slew, Lively One, Alysheba, Cutlass Reality, Personal Flag, Seeking the Gold.

BLEEDER MEDICATION

- 2—Marshesseaux, Le L'Argent, Medieval Decoy, Little Brianne, Countess Midori, Littlebitapleasure, Ataentsic, Zadracarta, Raging Lady.
- 3—Popularity, Top Corsage, Beauty Cream, Atlatl, Fraulein Lieber, Miss Alto, Fieldy, Double the Charm, Charming Tigress.
- 4—Very Subtle, Afleet, Ready Jet Go, Calestoga, Sylvan Express, Olympic Prospect, You're No Bargain.
- 5—Approved to Fly, Stocks Up, Sequay.
- 6—Goodbye Halo, Willa on the Move, Integra.
- 6—Bet Twice, Blushing John, Simply Majestic, Niccolo Polo, Master Christopher.
- 8—Maharesred, Dr. Bizarre, Leading Prospect, Music Merci, Into Bucks.
- 9—Great Communicator.
- 10—Slew City Slew, Lively One, Cutlass Reality.

2nd Churchill



6 FURLONGS. (1.08%) 2nd Running ABROGATE HANDICAP. \$50,000 Added. Fillies and mares. 3-year-olds and upward. By subscription of \$50 each, which should accompany the nomination, \$250 to pass the entry box, \$250 additional to start, with \$50,000 added, of which 65% of all monies to the owner of the winner, 20% to second, 10% to third and 5% to fourth. If the race is divided, it will be drawn in accordance with the rules of racing. In the event that this race is not divided, the field will be limited to fourteen (14) starters with as many as four (4) horses placed on the also eligible list. If more than fourteen (14) entries pass the entry box, preference will be given to highweights, however two horses having common ties, through ownership cannot start to the exclusion of a single interest. Any horse excluded from running because of the aforementioned preference shall be refunded the entry fee. Starters to be named through the entry box at the usual time of closing. A trophy to the winning owner. High weights preferred. (Closed with 37 nominations.)

Marshesseaux

BRUMFIELD D

Table with columns: Date, Race, Time, Distance, and various performance metrics for Brumfield D.

Ch. m. 5, by Dr. Blum—Loboette, by Good Counsel

Table with columns: Date, Race, Time, Distance, and various performance metrics for Marshesseaux.

Le L'Argent

VASQUEZ J

Table with columns: Date, Race, Time, Distance, and various performance metrics for Vasquez J.

Ch. m. 6, by What a Pleasure—Flick Your Bick, by Bicker

Table with columns: Date, Race, Time, Distance, and various performance metrics for Le L'Argent.

Medieval Decoy

KUTZ D

Table with columns: Date, Race, Time, Distance, and various performance metrics for Kutz D.

Dk. b. or br. m. 6, by Medieval Man—Real Decoy, by Duc de Great

Table with columns: Date, Race, Time, Distance, and various performance metrics for Medieval Decoy.

Irish Nymph

DAY P

Table with columns: Date, Race, Time, Distance, and various performance metrics for Day P.

B. f. 3, by Irish Tower—Salem's Nymph, by Salem

Table with columns: Date, Race, Time, Distance, and various performance metrics for Irish Nymph.

Little Brienne

NO RIDER

Table with columns: Date, Race, Time, Distance, and various performance metrics for Little Brienne.

Dk. b. or br. f. 3, by Coastal—Spicy Life, by Cornish Prince

Table with columns: Date, Race, Time, Distance, and various performance metrics for Little Brienne.

Countess Midori

NO RIDER

Table with columns: Date, Race, Time, Distance, and various performance metrics for Countess Midori.

B. f. 3, by State Dinner—Dunja, by Raise a Native

Table with columns: Date, Race, Time, Distance, and various performance metrics for Countess Midori.

Littlebitpleasure

NO RIDER

Table with columns: Date, Race, Time, Distance, and various performance metrics for Littlebitpleasure.

B. m. 6, by I'ma Hell Raiser—Determining, by Decidedly

Table with columns: Date, Race, Time, Distance, and various performance metrics for Littlebitpleasure.

Ataentsic

FIRE E

Table with columns: Date, Race, Time, Distance, and various performance metrics for Fire E.

B. f. 4, by Hold Your Peace—Mythographer, by Secretariat

Table with columns: Date, Race, Time, Distance, and various performance metrics for Ataentsic.

Castle Lass

MELANCON L

Table with columns: Date, Race, Time, Distance, and various performance metrics for Castle Lass.

B. f. 4, by Irish Tower—Coral Dawn, by Turn to Mars

Table with columns: Date, Race, Time, Distance, and various performance metrics for Castle Lass.

Zadarcarta

HAWLEY S

Table with columns: Date, Race, Time, Distance, and various performance metrics for Hawley S.

Dk. b. or br. f. 3, by Bold Ruckus—Montmorency, by Selari

Table with columns: Date, Race, Time, Distance, and various performance metrics for Zadarcarta.

Raging Lady

NO RIDER

Table with columns: Date, Race, Time, Distance, and various performance metrics for Raging Lady.

B. f. 3, by Linkage—Lady From Hell, by Bravest Roman

Table with columns: Date, Race, Time, Distance, and various performance metrics for Raging Lady.

3rd Churchill

TURF



1 1/8 MILES. (TURF). (1.48%) 15th Running CARDINAL HANDICAP. \$50,000 Added. Fillies and mares. 3-year-olds and upward. By subscription of \$50 each, which should accompany the nomination, \$250 to pass the entry box, \$250 additional to start, with \$50,000 added, of which 65% of all monies to the owner of the winner, 20% to second, 10% to third and 5% to fourth. If the race is divided, it will be drawn in accordance with the rules of racing. In the event that this race is not divided, the field will be limited to ten (10) starters with as many as six (6) horses placed on the also eligible list. If more than ten (10) entries pass the entry box, preference will be given to highweights, however two horses having common ties through ownership cannot start to the exclusion of a single interest. Any horse excluded from running because of the aforementioned preference shall be refunded the entry fee. Starters to be named through the entry box at the usual time of closing. A trophy to the winning owner. High weights preferred. (Closed with 53 nominations.)

Coupled—Fraulein Lieber and Fieldy.

*Popularity

DAY P

Table with columns: Date, Race, Time, Distance, and various performance metrics for Day P.

Ch. m. 5, by General Assembly—Prudent Girl, by Primera

Table with columns: Date, Race, Time, Distance, and various performance metrics for Popularity.

Top Corsage

VALENZUELA P A

Table with columns: Date, Race, Time, Distance, and various performance metrics for Valenzuela P A.

Dk. b. or br. m. 5, by Topsider—Corsage, by Native Royalty

Table with columns: Date, Race, Time, Distance, and various performance metrics for Top Corsage.

Beauty Cream

DAY P

Table with columns: Date, Race, Time, Distance, and various performance metrics for Beauty Cream.

B. m. 5, by Rich Cream—Super Bowl Girl, by Far North

Table with columns: Date, Race, Time, Distance, and various performance metrics for Beauty Cream.

Noble Links

ASMUSSEN C

Table with columns: Date, Race, Time, Distance, and various performance metrics for Noble Links.

B. f. 3, by Vaguely Noble—Golferette, by Mr Randy

Table with columns: Date, Race, Time, Distance, and various performance metrics for Noble Links.

Also Eligible (Not in Post Position Order):

Table for 'Atlant' section, listing horse names like JOHNSON P A, owner Hunter Barbara, and race details including dates, times, and earnings.

Table for 'Savannah's Honor' section, listing horse names like PROSKAUER DR, owner Paulson A E, and race details.

Table for 'Fraulein Lieber' section, listing horse names like PERRET C, owner Siegel Jan, and race details.

Table for 'Miss Alto' section, listing horse names like DELAHOUSSEY E, owner Arnold & Muller, and race details.

Table for '*Fieldy' section, listing horse names like CORDERO A JR, owner Fernwood Stable & Seltzer, and race details.

Table for 'Graceful Darby' section, listing horse names like ROMERO R P, owner Phillips J W, and race details.

Table for 'Chez Chez Chez' section, listing horse names like CHEZ CHEZ CHEZ, owner Summerplace Farm, and race details.

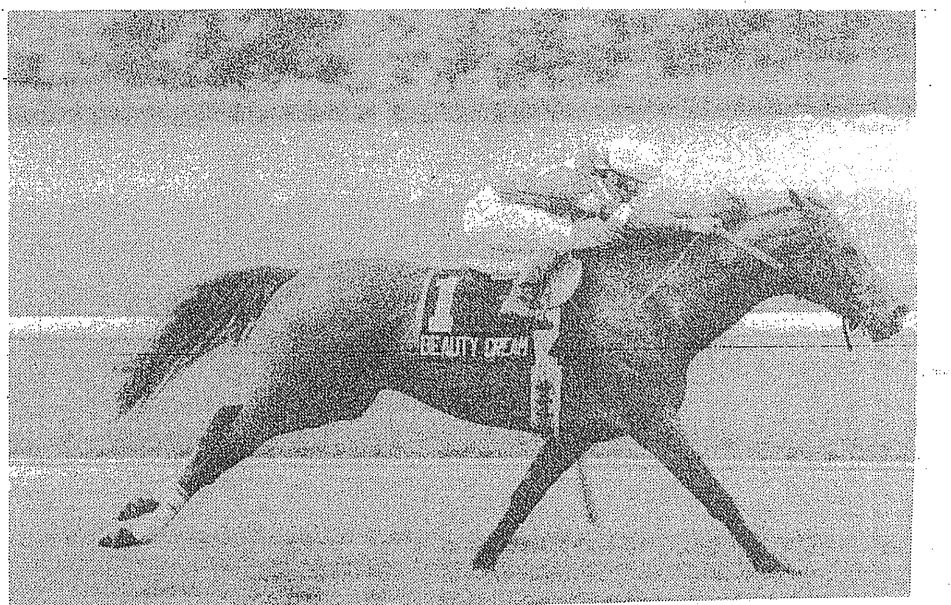
Table for 'JONOWO' section, listing horse names like VALESQUEZ J, owner Lenihan R, and race details.

Table for 'Token Gift' section, listing horse names like FOX RIDGE FARM, owner Fox Ridge Farm, and race details.

Table for 'Double The Charm' section, listing horse names like VASQUEZ J, owner Evans A, and race details.

Table for 'Bright Timing' section, listing horse names like FIRES E, owner Blasse Patricia B, and race details.

Table for 'Charming Tigress' section, listing horse names like NEEDHAM P, owner Needham P, and race details.



BEAUTY CREAM ... one of the favorites in Cardinal Handicap

Play The King *

SEYMOUR D J 126
 Own.—Kinghaven Farm
 16Oct88-3W0 6f :221 .45 1:10 ft *1 127
 16Oct88-Grade III
 6Oct88-9W0 6f :221 .453 1:102ft *2-3 124 2nd 1st 1st 1nk
 17Sep88-6Bel 6f :214 .444 1:093ft *3-2 135 37 35 433 433
 17Sep88-Grade II
 27Aug88-9W0 6f :222 .453 1:102ft 7-5e 127 421 523 32 1nk
 31Jly88-2W0 6f :223 .453 1:104gd *3-5 124 32 31 1st 1nk
 18Oct87-3W0 6f :222 .451 1:094ft *1-3 130 31 33 113 15
 18Oct87-Grade III
 19Sep87-7Bel 6f :221 .444 1:084m *2 131 31 32 413 52
 19Sep87-Grade II
 5Sep87-6Bel 6f :22 .45 1:091ft 33 122 213 213 2nd 3nk
 5Sep87-Grade III
 1Aug87-11Suf 6f :213 .443 1:094ft *23e 122 843 43 323 13
 1Aug87-Grade III
 19Jly87-3W0 6f :222 .451 1:091ft *1-2e 128 2nd 1st 2nd 113
 19Jly87-Grade II-C
 Oct 31 CD 5f :59 h Oct 23 W0 4f :45 b Oct 14 W0 tr.t 2ft :23 b Oct 1 W0 tr.t 6fd 1:12 h

Also Eligible (Not in Post Position Order):

You're No Bargain *

NO RIDER 126
 Own.—Hancock A B III & Bowen
 21Oct88-8Kee 6f :214 .44 1:092sy 83 117 651 55 223 26
 20Oct88-8Kee 6f :222 .451 1:093ft *9-5 123 413 42 24 13
 20Oct88-9TP 6f :221 .451 1:102ft *21 121 321 1st 1st 1st
 17Sep88-10Bue 6f :214 .442 1:084ft *7-5 122 31 32 32 213
 27Aug88-8EIP 6f :222 .45 1:091ft *2-3 119 1st 121 121 12
 16Jly88-10LaD 6f :22 .443 1:092ft 33 112 523 533 78 693
 16Jly88-Bobbled start.
 3Jly88-9Crc 7f :23 .462 1:241ft *6-5 115 33 32 23 3nd
 12Jun88-8Crc 6f :214 .442 1:172ft *9-5 117 421 34 313 1nk
 8Oct87-9Crc 6f :221 .452 1:182ft *7-5 117 58 56 13 13
 23Sep87-7Crc 1 :483 1:132 1:40 sy *4-5 114 463 333 113 113
 Nov 2 CD 3f :35 b Sep 12 TP 5f :59 h

5th Churchill



1 1/2 MILES. (1.41%) 5th Running THE BREEDERS' CUP JUVENILE FILLIES (Grade I).
 Purse \$1,000,000. Fillies, 2-year-olds. Weight, 119 lbs. Value of race, \$1,000,000. Value to winner, \$450,000, second \$225,000, third \$108,000, fourth \$70,000, fifth \$50,000, sixth \$10,000. Nominator Awards: Stallion, winner \$25,000, second \$12,500, third \$6,000; Foal, Winner \$25,000, second \$12,500, third \$6,000. Stallion awards will be paid only to the nominators of fully eligible stallions. Owners who supplement horses to Breeders' Cup Day races will be eligible for the Foal Nominator's Award in the case of a 12 per cent supplementary nomination or both the Foal Nominator's Award and the Stallion Nominator's Award in the case of a 20 per cent supplementary nomination. In accordance with the Breeders' Cup/European Breeders' Fund cross-registration agreement, nominator's awards will not be paid to horses eligible through the E.B.F. All unpaid nominator's awards will remain the property of Breeders' Cup Limited.

Coupled—Darby Shuffle, Lea Lucinda, Open Mind, Some Romance and One Of A Klein.

Approved to Fly DELAHOUSAYE E 119
 Own.—South Point Bloodstock
 10Oct88-8SA 1 1/2 :464 1:113 1:44 ft 33 116 42 531 44 443
 10Oct88-Grade I
 4Sep88-8Dmr 1 :453 1:101 1:362ft 73 114 631 1st 1st 1nk
 4Sep88-Grade II, 1st disqualified and placed second.
 22Aug88-8Dmr 7f :22 .45 1:232ft 53 116 891 651 33 23
 22Aug88-Grade III
 29Jly88-8Dmr 6f :213 .444 1:094ft 23 116 13111311 810 783
 29Jly88-Fanned wide into drive
 9Jly88-8Hol 6f :213 .444 1:104ft 36 116 1012 910 710 453
 9Jly88-Grade III, Wide 3/8 turn; blocked, altered path stretch
 11Jun88-1AC 4 1/2 :231 .46 5:21ft 23e 112 9 613 2nd 1nk
 Nov 3 CD 3f :373 b Oct 28 CD 6f :1:20 b Oct 5 SA 5f :1:012 h Sep 28 SA 1 f :1:42 h

Darby Shuffle

KRONE J A 119
 Own.—Allen Joseph
 22Oct88-7Lr 1 1/2 :471 1:131 1:444fm 13 119 113 12 2nd 233
 22Oct88-Grade I
 20Oct88-7Lr 1 :464 1:121 1:363fm 4 115 111 113 12 1st
 17Sep88-8Med 6f :22 .45 1:103gd *7-5 114 23 1st 12 123
 3Sep88-6Mth 6f :214 .444 1:104ft 41 117 21 2nd 2nd 23
 18Aug88-8Sar 6f :22 .451 1:104ft *2-3e 114 22 353 381 414
 18Aug88-Grade III
 3Aug88-6Mth 5 1/2 :222 .451 1:043ft 23 117 111 13 17 112
 22Jly88-5Mth 5 1/2 :232 .48 1:083sy *9-5 117 35 363 463 513
 Oct 18 Mth 4f :48 b Oct 12 Mth 5f :1:003 h Sep 28 Mth 4f :483 b

Lea Lucinda

PINCAJ L JR 119
 Own.—Calumet Farm Inc
 10Oct88-8SA 1 1/2 :464 1:113 1:44 ft *2 116 773 763 773 7143
 10Oct88-Grade I
 24Sep88-9Cby 170 :474 1:121 1:423ft *3-5 120 441 41 2nd 11
 4Sep88-8Dmr 1 :453 1:101 1:362ft 73 114 513 313 31 2nk
 4Sep88-Grade II, Placed first through disqualification.
 22Aug88-8Dmr 7f :22 .45 1:232ft *3-2 117 54 523 43 343
 22Aug88-Grade III
 6Aug88-9Mth 6f :213 .443 1:114ft 3 119 753 553 35 333
 6Aug88-Grade II
 9Jly88-8Hol 6f :213 .444 1:104ft *7-5e 116 433 453 353 213
 9Jly88-Grade III
 22Jun88-4Hol 5 1/2 :221 .46 1:044ft 17 117 42 2nd 2nd 12
 Oct 30 SA 5f :1:022 h Oct 20 SA 5f :1:02 h Oct 5 SA 5f :1:004 h Sep 16 Dmr 5f :1:021 h

Seattle Meteor *

ROMERO R P 119
 Own.—Buckland Farm
 14Oct88-8Kee 1 1/2 :49 1:134 1:462ft *3-2 118 523 213 33 343
 14Oct88-Grade II
 20Oct88-8Bel 7f :224 .461 1:244ft 6-5 119 22 233 27 25
 20Oct88-Grade I
 29Aug88-8Sar 6f :221 .453 1:123sy 23 119 58 473 433 13
 29Aug88-Grade I
 6Aug88-9Mth 6f :213 .443 1:114ft 33 119 64 873 573 433
 6Aug88-Grade II, Steadied
 13Jly88-8Bel 5 1/2 :223 .463 1:053ft 33 112 33 13 113 11
 13Jly88-Grade III
 25May88-3GS 4 1/2 :23 .472 .533gd *1 120 10 843 43 11
 25May88-Lunged gate, driv
 Oct 30 CD 5f :1:012 h Oct 12 Kee 4f :48 b Oct 30 Bel 4f :463 b Sep 26 Bel 6f :1:144 h

Eloquent Minister

VASQUEZ J 119
 Own.—Sangster R E
 21Oct88-4Doncaster(Eng) 5f 1:004gd 23 118 11
 10Oct88-4PhoenixPk(Ire) 7f 1:223gd 5 125 10 523
 10Jun88-7Bel 5 1/2 :221 .453 1:044ft *2-5 114 13 15 110 1123
 27May88-6Bel 5f :22 .463 .591ft *1 117 12 13 16 163
 Nov 3 CD 3f :392 b Nov 2 CD 3f :39 b

Coax Chelsie

ANTLEY C W 119
 Own.—Miller E E
 14Oct88-8Kee 1 1/2 :49 1:134 1:462ft 5 118
 14Oct88-Grade II
 17Sep88-9TP 6f :221 .452 1:191gd *6-5 121 1083 1083 543 44
 28Aug88-10RD 6f :22 .453 1:12 gd *2-3 122 910 743 21 15
 3Aug88-8Sar 6f :212 .44 1:094ft 16 114 79 793 46 213
 3Aug88-Grade II
 16Jly88-3RD 6f :223 .46 1:12 ft *1 117 673 47 213 13
 26Jun88-9CD 6f :214 .461 1:111ft 83 112 65 54 533 38
 11Jun88-4CD 5 1/2 :224 .47 1:061ft *2 120 42 32 32 223
 28May88-5CD 5f :223 .463 .591ft 12 121 911 811 563 383
 B. f. 2, by Coax Me Chad—Dusty Powder, by Cannonade
 Br.—Miller Mrs Elmer E (Ky) 1988 8 2 2 2 \$148,284
 Tr.—Warren Ronnie G
 Lifetime 8 2 2 2 \$148,284
 643 533 47 493 Sum III 5 @Alciabades 65-24 WondrsDlght, AffrmdClssc, SttlMtor 7
 Bailey JD3 @Clissetta 78-21 WondrsDlght, UpSil, CrimsonCrrl 12
 Saumell L13 @Bassinett 83-17 CoxChlsI, IronndSilvr, CountryfdGI 14
 Day P4 @Schuyllville 89-09 Wondrs Delight, CoaxChelsie, Attu 9
 Cuffari S J2 Mdn 83-23 CoaxChelsie, RegalRaj, AhSoMjestic 9
 WdsCRJr6 @Debutnte 79-14 Seaquay, WeekndSpree, CoxChelsie 8
 Fires E6 @Mdn 88-14 WekndSpr, CoxChlsI, BublGummy 12
 Fires E2 @Mdn 86-18 Balabans, DecoratedDoll, CoaxChelsie 9

Stocks Up

VALENZUELA P A 119
 Own.—Merrill Stables
 10Oct88-8SA 1 1/2 :464 1:113 1:44 ft 43 115 54 32 333 223
 10Oct88-Grade I
 18Sep88-7Bel 6f :22 .451 1:17 ft 23 116 512 593 463 463
 18Sep88-Grade II
 22Aug88-9Dmr 7f :22 .45 1:232ft 3-2 117 423 31 113 13
 22Aug88-Grade III
 14Aug88-4Dmr 6f :214 .451 1:102ft 3 117 423 413 1st 123
 Oct 31 CD @7fm 1:283 h (d) Oct 25 CD 3f :374 bg Oct 5 SA 6f :1:42 h
 B. f. 2, by Kris S—Sunshine Starshine, by Marshua's Dancer
 Br.—Pribble Alan K (Fla) 1988 4 2 1 0 \$126,426
 Tr.—West Ted
 Lifetime 4 2 1 0 \$126,426
 54 32 333 223 StnsGL4 @Oak Leaf 78-16 One OfAKlein, StocksUp, LadyLister 7
 StnsGL4 @Astarita 84-19 ChannelThree, PatCopelan, Misturin 7
 StnsGL6 @Sorrento 85-17 StocksUp, ApprovedToFly, LeLucind 8
 Stevens G L6 @Mdn 86-13 Stocks Up, Beebrush, IonianBride 11
 Sep 12 Dmr 5f :583 h

Open Mind

CORDERO A JR 119
 Own.—Klein E V
 15Oct88-7Bel 1 :452 1:103 1:364ft *1-3e 119 46 353 23 2no
 15Oct88-Grade I
 18Sep88-3Lr 7f :224 .46 1:24 ft 6 119 673 683 45 243
 18Sep88-Grade II
 30Aug88-7Mth 6f :223 .461 1:11 ft 63 113 523 2nd 23 1nk
 15Aug88-11Mth 6f :23 .464 1:124ft 11 115 42 23 11 15
 Nov 1 CD 4f :51 b Oct 12 Mth 4f :50 b
 Ch. f. 2, by Deputy Minister—Stage Luck, by Stage Door Johnny
 Br.—Due Process Stable Inc (NJ) 1988 4 2 2 0 \$126,944
 Tr.—Lukas D Wayne
 Lifetime 4 2 2 0 \$126,944
 46 353 23 2no CrdrAJr6 @Frizette 81-17 SomeRomnce, OpnMind, Ms.GoldPol 7
 McCrrCJ2 @UsfgLssie 86-10 Ms.GoldPole, OpnMind, SafelyKept 9
 18Sep88-Wide, rallied
 CstdM3 @NJBreeders 85-18 Open Mind, Ms. GoldPole, DocDavid 7
 Castaneda M11 @Mdn 76-18 OpnMind, OprtionJonthon, RoyINDR 11
 Sep 30 Mth 4f :492 b Sep 13 Mth 4f :483 b

Seaquay

PERRET C 119
 Own.—Seaquay Stables
 16Oct88-10Crc 1 1/2 :484 1:144 1:501ft *8-5 120 523 313 2nd 2no
 16Oct88-Grade I
 18Sep88-9Crc 7f :223 .461 1:254ft 8-5 118 833 543 423 23
 35Sep88-9Crc 7f :231 .463 1:254ft *2-5 118 323 35 323 213
 21Aug88-9Crc 6f :221 .454 1:114ft *2-5 116 423 323 21 113
 21Aug88-Run in divisions
 6Aug88-9Mth 6f :213 .443 1:114ft 43 119 54 323 233 22
 6Aug88-Grade II
 13Jly88-8Bel 5 1/2 :223 .463 1:053ft *7-5 119 44 323 213 21
 13Jly88-Grade III
 26Jun88-9CD 6f :214 .461 1:111ft *1 114 53 313 1st 15
 5Jun88-3Crc 5f :221 .463 .591ft *1 114 43 323 33 123
 17May88-7Crc 4 1/2 :224 .464 .53 ft 53 114 4 533 33 223
 8May88-3Crc 5f :231 .472 1:009ft 73 116 21 2nd 1st 13
 Oct 30 CD 6f :1:152 b Oct 12 Crc 4f :49 b Oct 6 Crc 1 sy :1:42 h
 B. f. 2, by Fire Dancer—On Hold, by Hold Your Peace
 Br.—Newchance Farm (Fla) 1988 12 4 7 0 \$267,235
 Tr.—Garrard James R
 Lifetime 12 4 7 0 \$267,235
 523 313 2nd 2no PrttC9 @RIMyDearGirl 68-22 SezFourty, Seaquay, GeorgiesDoctor 11
 PrttC6 @RFlaStallion 86-13 Sez Fourty, Seaquay, IronandSilver 12
 EhrInspirM1 @Riviera 86-15 Sez Fourty, Seaquay, Madel's Lass 6
 EhrInspirM7 @RDrStVn 92-14 Seaquay, Sez Fourty, PrincessMora 8
 EhrInspirM4 @Sorority 79-17 Divine Answer, Seaquay, LeaLucinda 9
 EhrInspirM2 @Astoria 86-20 SeattleMeteor, Seaquay, Conductrice 8
 EhrInspirM3 @Debutnte 87-14 Seaquay, WeekndSpree, CoxChelsie 8
 EhrInspirM1 @Aw12300 96-12 Seaquay, Princess Mora, SezFourty 6
 EhrInspirM5 @Aw12300 101 — NoOneTangoed, Seaquay, RoyalSnub 5
 EhrInspirM4 @Mdn 89-14 Sequy, BbyFelsSoGood, DncEnough 8
 Sep 27 Crc 1 f :1:42 h

Some Romance

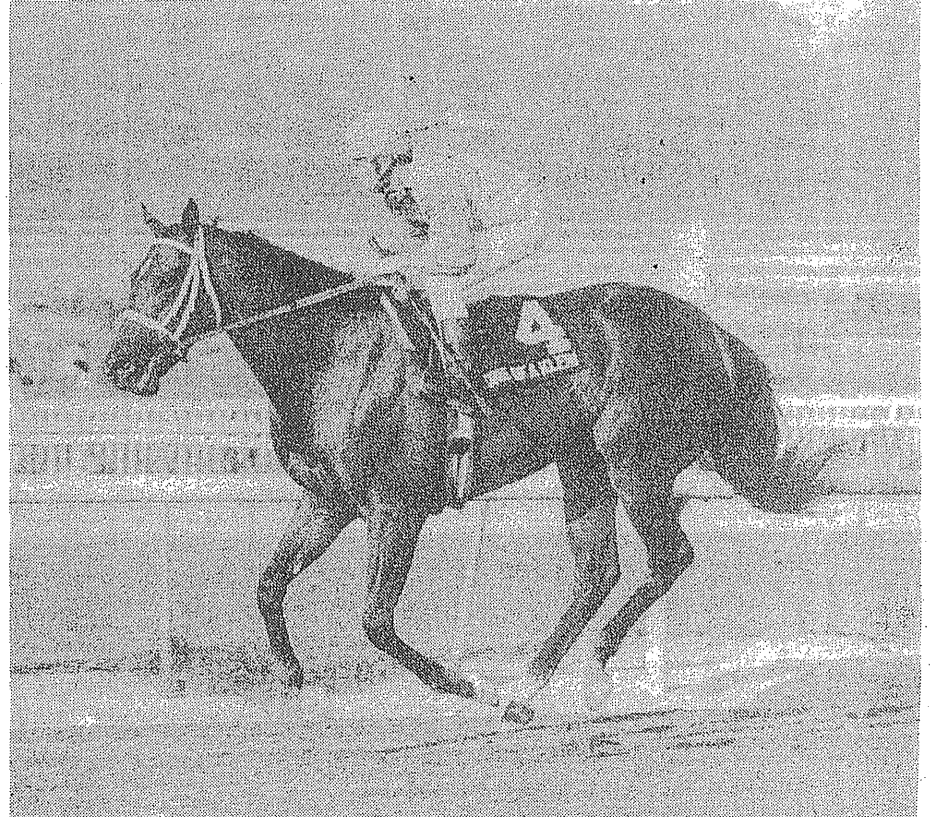
STEVENS G L 119
 Own.—Klein E V
 15Oct88-7Bel 1 :452 1:103 1:364ft *1-3e 119 15 13 13 1no
 15Oct88-Grade I, Bad step, driving
 20Oct88-8Bel 7f :224 .461 1:244ft *1-2 119 12 133 17 15
 20Oct88-Grade I
 22Sep88-1Bel 7f :23 .462 1:241ft *1-3 121 113 12 17 183
 11Sep88-5Bel 6f :223 .453 1:092ft 63 117 11 15 112 1153
 7Aug88-4Sar 6f :221 .452 1:112m 23 117 883 812 812 814
 Nov 1 CD 4f :504 b Oct 12 Bel 4f :48 h Sep 7 Bel 3f :36 h
 B. f. 2, by Fappiano—Zippy Do, by Hilarious
 Br.—Folsom Robert S (Ky) 1988 5 4 0 0 \$308,700
 Tr.—Lukas D Wayne
 Lifetime 5 4 0 0 \$308,700
 15 13 13 1no PincyLjr4 @Frizette 81-17 SomeRomnce, OpnMind, Ms.GoldPol 7
 StnsGL3 @Matron 78-23 SomeRomnce, SettIMtor, DrmyMimi 3
 StevensGL1 @Aw27000 81-24 Some Romance, Saratoga Ten, Gild 7
 Santagata N3 @Mdn 92-21 SomeRomnce, NiteofFun, SveCrek 7
 Santos J A4 @Mdn 69-12 First Beam, Snowing, Bold Costa 11
 Sep 7 Bel 3f :36 h

Affirmed Classic

DAY P 119
 Own.—Beard D
 14Oct88-8Kee 1 1/2 :49 1:134 1:462ft 33 118 413 433 223 213
 14Oct88-Grade II
 16Sep88-10LaD 7f :23 .461 1:243ft *6-5 114 21 323 1st 13
 25Aug88-2LaD 6f :223 .464 1:12 ft *3-2 119 31 2nd 12 143
 Nov 1 CD 6f :1:152 h Oct 26 Kee 7f :1:293 h Oct 1 LaD 6f :1:163 h
 Ch. f. 2, by Affirmed—Classical Band, by Master Derby
 Br.—Green Curtis C (Ky) 1988 3 2 1 0 \$83,590
 Tr.—Robideaux Larry Jr
 Lifetime 3 2 1 0 \$83,590
 Day P2 @Alciabades 72-24 WondrsDlght, AffrmdClssc, SttlMtor 7
 BrqK8 @Spr Dby Deb 85-23 AffrmdClssc, WhtFlwr, JdntCPrsct 8
 Bourque K10 @Mdn 82-23 AffrmdClssc, IslndJmbr, AntsSrprs 12
 Sep 25 LaD 5f :1:03 b

One Of A Klein

MCCARRON C J 119
 Own.—Klein Mr—Mrs E V
 10Oct88-8SA 1 1/2 :464 1:113 1:44 ft 43 115 11 13 123 123
 10Oct88-Grade I
 4Sep88-8Dmr 1 :453 1:101 1:362ft *2-3 114 31 2nd 21 573
 4Sep88-Grade II
 22Aug88-4Dmr 6f :22 .444 1:093ft 33 117 413 13 113 133
 Oct 30 SA 5f :594 h Oct 21 SA 5f :503 h Oct 6 SA 4f :482 h
 B. f. 2, by Danzig—Barely Even, by Creme de la Creme
 Br.—Seitzer & Arriola (Ky) 1988 3 2 0 0 \$188,140
 Tr.—Lukas D Wayne
 Lifetime 3 2 0 0 \$188,140
 11 13 123 123 McCrrCJ3 @Oak Leaf 81-16 One OfAKlein, StocksUp, LadyLister 7
 McCrrCJ4 @Dmr Deb 78-10 #ApprovedToFly, LLucnd, BwrOfThCt 8
 McCarron CJ12 @Mdn 90-12 OneOfAKlein, Shpiro'sMistrs, Bistr 12
 Sep 28 SA 6f :1:154 h



ONE OF A KLEIN
 ... won Oak Leaf Stakes in her last start

6th Churchill



1 1/4 MILES. (1.48%) 5th Running THE BREEDERS' CUP DISTAFF (Grade I). Purse \$1,000,000. Fillies and mares, 3-year-olds and upward. Weight, 3-year-olds, 119 lbs., older, 123 lbs. Value of race, \$1,000,000. Value to winner \$450,000, second \$225,000, third \$108,000, fourth \$70,000, fifth \$50,000, sixth \$10,000. Nominator Awards: Stallion, winner \$25,000, second \$12,500, third \$6,000; Foal, winner \$25,000, second \$12,500, third \$6,000. Stallion awards will be paid only to the nominators of fully eligible stallions. Owners who supplement horses to Breeders' Cup Day races will be eligible for the Foal Nominator's Award in the case of a 12 per cent supplementary nomination or both the Foal Nominator's Award and the Stallion Nominator's Award in the case of a 20 per cent supplementary nomination. In accordance with the Breeders' Cup/European Breeders' Fund cross-registration agreement, nominator's awards will not be paid to horses eligible through the E.B.F. All unpaid nominator's awards will remain the property of Breeders' Cup Limited.

Coupled—Epitome and Hail a Cab; Winning Colors and Classic Crown.

Table for Epitome: B. f. 3, by Summing—Honest and True, by Mr Leader. Br.—Nicholson & Bennett (Ky) 1988 4 2 2 0 \$69,240. Tr.—Hauswald Philip 1987 8 3 2 1 \$534,805. Lifetime 12 5 4 1 \$604,045. Own.—Bell J A III. 25Oct88-7Kee 1 1/4:49 1:14 1:46 1/4ft *1-3 120 1st 2 1/2 1st 22 Day P1 @Aw29000 73-24 Stoneleigh's Hope, Epitome, Doll Zen 5

Table for Goodbye Halo: Ch. f. 3, by Halo—Pound Foolish, by Sir Ivor. Br.—Reed Dr W O (Ky) 1988 8 5 0 2 \$650,717. Tr.—Whittingham Charles 1987 4 3 0 0 \$431,585. Lifetime 12 8 0 2 \$1,082,302. Turf 1 0 0 1 \$22,500. Own.—Campbell Jr & Hancock III. 16Oct88-8SA 1 1/4:48 1:13 1:47 m 8-5 120 21 2 1/2 2 1/2 3 1/2 DhsE4 @Ls Plms H 89-12 Annoconnor, NoReview, Goodbye Halo 7

Table for Sham Say: Gr. f. 3, by Oh Say—Sham Bee, by Sham. Br.—Moffett Mr—Mrs Preston I (Md) 1988 6 3 1 2 \$289,032. Tr.—Cocks William 1987 5 5 0 0 \$158,106. Lifetime 11 8 1 2 \$447,138. Own.—Evergreen Farm. 16Oct88-8Bel 1 1/4:48 1:36 2:01 1/4ft 6 1/2 118 12 1st 22 36 VsquzJ @Beldame 86-16 PersonalEnsign, ClassicCrown, ShmSy 5

Table for Hail a Cab: Dk. h. or br. m. 5, by Hail the Pirates—Fifth Avenue Lady, by Rising Market. Br.—Bell J A III & Franks J (Ky) 1988 11 3 0 4 \$266,005. Tr.—Hauswald Philip 1987 10 3 0 1 \$92,456. Lifetime 33 11 0 8 \$473,691. Turf 1 0 0 0. Own.—Bell J A III. 15Oct88-8Kee 1 1/4:47 1:12 1:51 ft 25 123 514 512 22 13 VsquzJ3 @Spinster 79-24 Hail a Cab, WillaontheMove, Integra 5

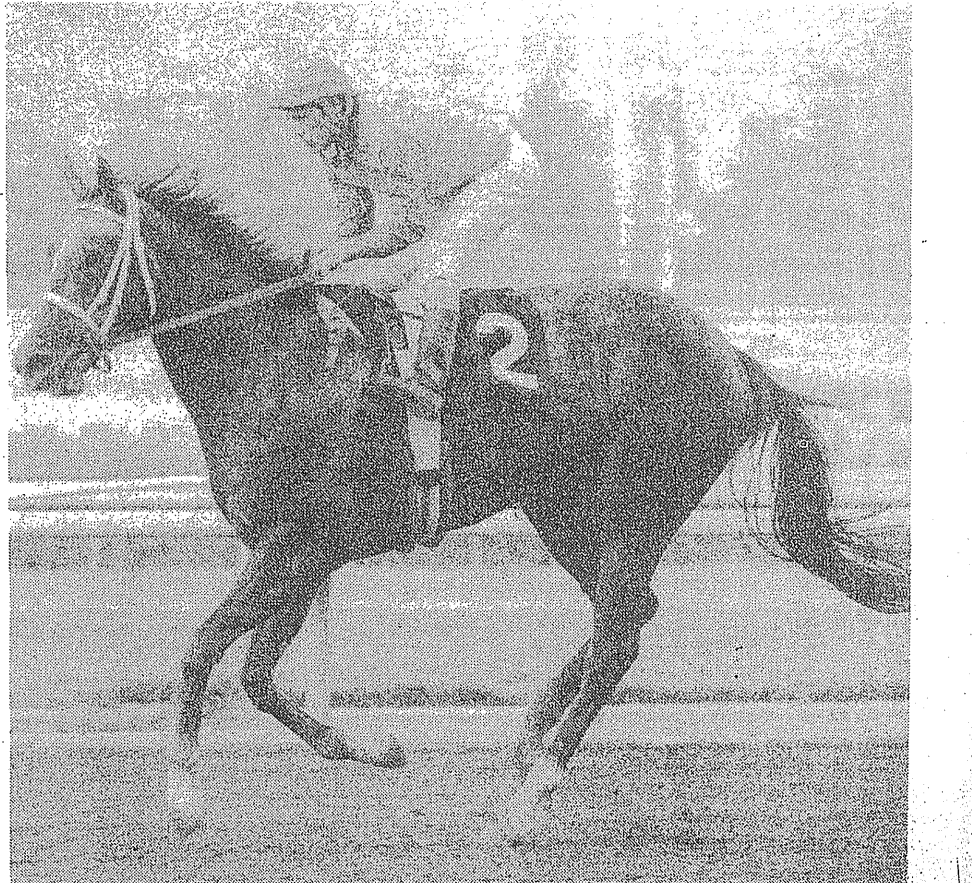
Table for Willa on the Move: B. f. 3, by Assert—Willamae, by Tentam. Br.—Quinichett R L (Md) 1988 11 5 3 2 \$425,864. Tr.—Blusiewicz Leon J 1987 1 1 0 0 \$16,200. Lifetime 12 6 3 2 \$442,064. Own.—Lamarque R. 15Oct88-8Kee 1 1/4:47 1:12 1:51 ft 3 1/2 119 44 2 1/2 12 23 PerrelC5 @Spinster 76-24 Hail a Cab, WillaontheMove, Integra 5

Table for Personal Ensign: B. f. 4, by Private Account—Grecian Banner, by Hoist the Flag. Br.—Phipps Ogden (Ky) 1988 6 6 0 0 \$752,640. Tr.—McGaughy Claude III 1987 4 4 0 0 \$302,640. Lifetime 12 12 0 0 \$1,229,880. Own.—Phipps O. 16Oct88-8Bel 1 1/4:48 1:36 2:01 1/4ft *1-9 123 22 2nd 12 15 1/2 RmrRP1 @Beldame 92-16 PersonalEnsign, ClassicCrown, ShmSy 5

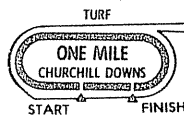
Table for Integra: B. f. 4, by Torsion—Clever Miss, by Kaskaskia. Br.—Farish & Hannibal Horse Co (Ky) 1988 10 4 1 3 \$267,960. Tr.—Helmbrecht William R 1987 3 2 0 0 \$28,750. Lifetime 13 6 1 3 \$296,710. Turf 1 0 0 0. Own.—Aubin G J lessee. 15Oct88-8Kee 1 1/4:47 1:12 1:51 ft 15 123 2nd 32 42 1/2 35 VlsquzJ1 @Spinster 74-24 Hail a Cab, WillaontheMove, Integra 5

Table for Winning Colors: Ro. f. 3, by Caro—All Rainbows, by Bold Hour. Br.—Echo Valley Horse Farm Inc (Ky) 1988 9 4 2 1 \$1,122,746. Tr.—Lukas D Wayne 1987 2 2 0 0 \$31,400. Lifetime 11 6 2 1 \$1,154,146. Own.—Klein E V. 15Oct88-8Kee 1 1/4:47 1:12 1:51 ft *1-3 119 1st 11 1/2 3 1/2 4 1/2 StvnsGL2 @Spinster 64-24 Hail a Cab, WillaontheMove, Integra 5

Table for Classic Crown: Dk. h. or br. f. 3, by Mr Prospector—Six Crowns, by Secretariat. Br.—Carl Rosen Assoc (Ky) 1988 9 2 3 1 \$239,364. Tr.—Lukas D Wayne 1987 3 2 0 0 \$240,640. Lifetime 12 4 3 1 \$480,004. Own.—Star Crown Stable. 16Oct88-8Bel 1 1/4:48 1:36 2:01 1/4ft 5e 118 32 32 3 1/2 2 1/2 2 1/2 KrnJA2 @Beldame 86-16 PersonalEnsign, ClassicCrown, ShmSy 5



WINNING COLORS . . . Kentucky Derby heroine top contender in Distaff



1 MILE. (Turf). (1.37%) 5th Running THE BREEDERS' CUP MILE (Grade I). Purse \$1,000,000. 3-year-olds and upward. Weight, 3-year-olds, 123 lbs., older, 126 lbs. Fillies and mares allowed 3 lbs. Value of race, \$1,000,000. Value to winner \$450,000, second \$225,000, third \$108,000, fourth \$70,000, fifth \$50,000, sixth \$30,000. Nominator Awards: Stallion, winner \$25,000, second \$12,500, third \$6,000; Foal, winner \$25,000, second \$12,500, third \$6,000. Stallion awards will be paid only to the nominators of fully eligible stallions. Owners who supplement horses to Breeders' Cup Day races will be eligible for the Foal Nominator's Award in the case of a 12 per cent supplementary nomination or both the Foal Nominator's Award and the Stallion Nominator's Award in the case of a 20 per cent supplementary nomination. In accordance with the Breeders' Cup/European Breeders' Fund cross-registration agreement, nominator's awards will not be paid to horses eligible through the E.B.F. All unpaid nominator's awards will remain the property of Breeders' Cup Limited.

Coupled—Blushing John and Miesque.

Table for Posen (MCCARRON C J) and Miesque (HEAD F). Includes owner, trainer, and race results.

Table for Bet Twice (PERRET C) and Mill Native (ASMUSSEN C B). Includes owner, trainer, and race results.

Table for Steinlen (PINCAY L JR) and Blushing John (DAY P). Includes owner, trainer, and race results.

Table for Ravinella (GUIGNARD G) and Master Christopher (ANTLEY C W). Includes owner, trainer, and race results.

Table for Blushing John (DAY P) and Simply Majestic (CORDERO A JR). Includes owner, trainer, and race results.

Table for Simply Majestic (CORDERO A JR) and Miesque (HEAD F). Includes owner, trainer, and race results.

Table for Mohamed Abdu (STEVENS G L) and Miesque (HEAD F). Includes owner, trainer, and race results.

Table for Miesque (HEAD F) and Niccolo Polo (BRUMFIELD D). Includes owner, trainer, and race results.

Table for Niccolo Polo (BRUMFIELD D) and Mill Native (ASMUSSEN C B). Includes owner, trainer, and race results.

Table for Mill Native (ASMUSSEN C B) and Warming (EDDERY P). Includes owner, trainer, and race results.

Table for Warming (EDDERY P) and Master Christopher (ANTLEY C W). Includes owner, trainer, and race results.

Table for Master Christopher (ANTLEY C W) and Blushing John (DAY P). Includes owner, trainer, and race results.



MIESQUE beating WARNING in Group I race at Deauville.

Agence de Presse

8th Churchill



1 1/16 MILES. (141%) 5th Running THE BREEDERS' CUP JUVENILE (Grade I). Purse \$1,000,000. Colts and geldings, 2-year-olds. Weight, 122 lbs. Value of race, \$1,000,000. Value to winner \$450,000, second \$225,000, third \$108,000, fourth \$70,000, fifth \$50,000, sixth \$10,000. Nominator Awards: Stallion, winner \$25,000, second \$12,500, third \$6,000; Foal, winner \$25,000, second \$12,500, third \$6,000. Stallion awards will be paid only to the nominators of fully eligible stallions. Owners who supplement horses to Breeders' Cup Day races will be eligible for the Foal Nominator's Award in the case of a 12 per cent supplementary nomination or both the Foal Nominator's Award and the Stallion Nominator's Award in the case of a 20 per cent supplementary nomination. In accordance with the Breeders' Cup/European Breeders' Fund cross-registration agreement, nominator's awards will not be paid to horses eligible through the E.B.F. All unpaid nominator's awards will remain the property of Breeders' Cup Limited.

Coupled—Music Merci and Mountain Ghost.

Is It True

B. c. 2, by Raja Baba—Roman Rockette, by Proudest Roman
Br.—Jones Warner L (Ky) 1988 5 1 2 1 \$155,342
Tr.—Lukas D Wayne
Lifetime 5 1 2 1 \$155,342
PncLJr 2 Champagne 87-17 Easy Goer, Is It True, Irish Actor 4
150Oct88-8Bel 1 :45 1:10 1:34 7 122 1 1/2 1 1/2 2 1/2 2 1/2
150Oct88-Grade I
10Oct88-8Bel 7f :22 1:23 1:39 8 122 2 2 5 1/2 3 3/4
10Oct88-Grade I; Disqualified and placed fourth
10Sep88-3Bel 6f :22 1:09 1:24 11 118 1 1/2 1 1/2 1 1/2 1 1/2
19Aug88-5Sar 7f :22 1:22 1:39 2 118 2 1 1 1/2 2 1/2
3Aug88-5Sar 5f :22 1:46 1:58 6 118 9 1 1 1/2 6 1/2
Nov 1 CD 4f ft :48 1/2 b Sep 26 Bel 4f ft :48 1/2 b

Double Quick

Dk. b. or br. c. 2, by To the Quick—Sweetly Scheming, by Creme de la Creme
Br.—King Hugh G (Ky) 1988 4 2 1 1 \$120,518
Tr.—Stute Melvin F
Lifetime 4 2 1 1 \$120,518
PedrozMA 2 Nrfk 75-19 Hawkster, Bold Bryn, Double Quick 9
150Oct88-8SA 1 1/2 :46 1:12 1:43 16 118 1 1/2 1 1/2 1 1/2 1 1/2
150Oct88-Grade I
50Oct88-3SA 7f :22 1:45 1:23 4 115 1 1 1 1/2 1 1/2
50Oct88-Bumped
16Sep88-7Fpx 6 1/2 :22 1:45 1:19 1 1/2 118 1 1/2 1 1/2 1 1/2 1 1/2
4Sep88-6Dmr 6f :21 1:43 1:09 6 117 2 1 2 1/2 2 1/2
Nov 2 CD 4f ft :46 1/2 h Oct 28 CD 1gd 1:46 b Oct 23 CD 5f sy 1:06 b Oct 11 SA 5f ft :58 1/2 h

Maharesred

Ch. g. 2, by Maheras—Dubbed In, by Silent Screen
Br.—Bell A & Joyce (Wash) 1988 4 4 0 0 \$117,476
Tr.—Smith Marion L
Lifetime 4 4 0 0 \$117,476
Solis A 8 J Gtsn Fut 83-14 Maharesred, Honest John, Bubba By 11
5Sep88-10MeP 7f :23 1:48 1:29 2 120 2 1 1 1/2 1 1/2
28Aug88-2MeP 7f :24 1:49 1:29 1 120 3 1 1 1/2 1 1/2
17Jly88-4Lga 5f :22 1:45 1:58 5 120 2 1 2 1/2 1 1/2
Nov 1 CD 5f ft 1:00 h Oct 26 CD 7f ft 1:26 1/2 h Oct 20 SA 7f ft 1:28 h Oct 15 SA 5f ft 1:02 1/2 h

Dr. Bizzare

Ch. c. 2, by Raise a Man—Wilca, by Tibur
Br.—Silver Creek Farm Inc. (Ohio) 1988 6 4 1 0 \$161,080
Tr.—Flint Bernard S
Lifetime 6 4 1 0 \$161,080
CsPJ 3 Juv Champ H 90-04 Dr. Bizzare, The FircLook, Lucky Rlph 12
23Oct88-8Beu 1 1/2 :45 1:10 1:43 12 124 2 3 2 1 1/2 1 1/2
80Oct88-8Beu 6f :22 1:45 1:12 12 122 2 1 2 1 1/2 1 1/2
10Oct88-10Tdn 1 1/2 :46 1:12 1:45 11 120 1 1/2 1 1/2 1 1/2 1 1/2
4Sep88-10Tdn 6f :22 1:46 1:13 11 120 2 2 2 1 1/2 2 1/2
18Aug88-3RD 6f :22 1:46 1:12 11 118 1 1/2 1 1/2 1 1/2 1 1/2
6Aug88-10RD 6f :21 1:45 1:12 13 113 1 1/2 1 1/2 2 1/2 6 3/4
Oct 20 CD 6f ft 1:16 b

Leading Prospect

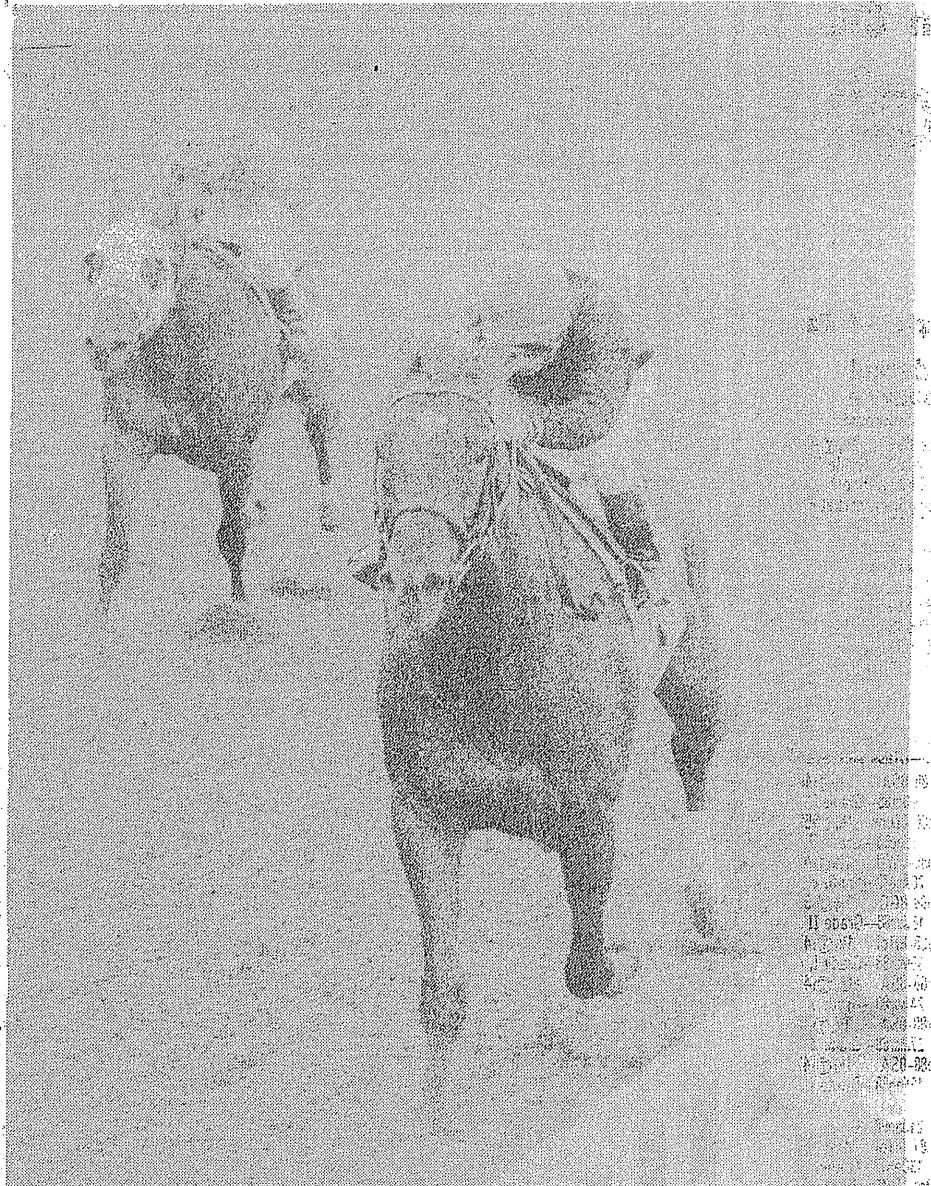
B. c. 2, by Crafty Prospector—Lady Brenda, by Top Command
Br.—Delfiner M (Fla) 1988 12 1 4 2 \$110,668
Tr.—Salzman John E
Lifetime 12 1 4 2 \$110,668
AnticW 1 Yng America 77-13 Irish Actor, The Boss, Revive 16
27Oct88-9Med 1 1/2 :46 1:12 1:44 20 119 3 2 3 1 1/2 5 1/2
27Oct88-Grade I; Drifted out; Disqualified and placed sixth
14Oct88-8Med 6f :21 1:44 1:10 11 114 9 3 8 1/2 3 1/2
14Oct88-Placed second through disqualification
10Oct88-9Haw 1 1/2 :46 1:11 1:43 11 112 3 2 1 1/2 5 1/2 6 1/2
10Sep88-9Lrl 6f :22 1:46 1:12 11 114 4 3 6 1/2 8 1/2 9 1/2
27Aug88-8Sar 6 1/2 :21 1:45 1:16 9 122 4 2 5 1/2 3 1/2 3 1/2
27Aug88-Grade I; Steadied
17Aug88-8Sar 6f :22 1:45 1:10 11 115 4 2 4 1/2 2 1/2 2 1/2
17Aug88-Grade II
5Aug88-8Sar 6f :22 1:45 1:10 14 117 3 2 3 1/2 3 3/4
AntleyCW 1 Sar Spec 1 81-15 Trapp Mountain, Bio, Leding Prospect 7
5Aug88-Grade II; Br thru gate
20Jly88-8Med 6f :21 1:44 1:11 27 115 1 1/2 1 1/2 1 1/2 2 1/2
AntlyCW 10 Trenton 81-26 Mr. SeSnders, FirMkr, Lding Prospect 10
20Jly88-Grade III; 4 Dead heat
28Jun88-6Mth 5 1/2 :21 1:45 1:05 7 120 6 1/2 6 1/2 4 1/2 4 1/2
Saumell L 7 Aw15000 82-19 TyHrdndFst, MightyRj, SminolSlwpy 9
Sep 24 Lrl 7f ft 1:25 1/2 h Sep 17 Lrl 5f ft 1:00 h

Music Merci

Gr. g. 2, by Stop the Music—Merci Croquet, by Jacinto
Br.—Strawbridge G Jr (Ont-C) 1988 6 4 0 0 \$299,000
Tr.—Lewis Craig A
Lifetime 6 4 0 0 \$299,000
McCrrnCJ 7 Nrfk 67-19 Hawkster, Bold Bryn, Double Quick 9
150Oct88-8SA 1 1/2 :46 1:12 1:43 11 118 2 1/2 3 1/2 4 1/2 6 1/2
McCrrnCJ 7 Dmr Fut 91-14 Music Merci, Bruho, Texian 11
14Sep88-Grade I; Fanned wide 7/8 turn; green in stretch
17Aug88-8Dmr 6f :22 1:45 1:10 12 118 2 1/2 1 1/2 1 1/2 1 1/2
McCarronCJ 2 De Anza 88-16 MscMrc, ThrTmsOldr, Plymonmort 6
23Jly88-8Hol 6f :21 1:44 1:08 8 117 5 6 5 1/2 7 1/2 7 1/2
Gryder AT 1 Hol Juv 85-12 KingGlorious, Bruho, MountainGhost 9
23Jly88-Grade II
6Jly88-8Hol 6f :22 1:45 1:10 11 117 2 1/2 1 1/2 1 1/2 1 1/2
Gryder A T 6 Aw33000 92-16 Music Merci, Bruho, MountainGhost 6
20May88-4Hol 5f :22 1:45 1:07 16 117 1 1/2 1 1/2 1 1/2 1 1/2
Gryder A T 2 Mdn 87-16 MusicMrci, ShippingTm, PdsProms 10
Oct 30 CD 6f ft 1:17 b Oct 22 SA 6f ft 1:12 1/2 h Oct 9 SA 5f ft 1:34 h

Tagel

B. c. 2, by Cox's Ridge—Featherhill, by Lyphard
Br.—Warner Marvin L Sr & Jr (Ky) 1988 2 2 0 0 \$44,093
Tr.—Boutin Francois
Lifetime 2 2 0 0 \$44,093
PrStRoman (Gr3) Tagel, SilverTornado, SentimentlSide 8
4Sep88-1Longchamp (Fra) a1 1:45 sf 7-5 123 1 1/2 1 1/2
Pr deFontenoy (Mdn) Tagel, River Warden, Akhtal 5
Nov 3 CD 6f ft 1:14 1/2 b



EASY GOER

... son of Alydar odds-on choice in Juvenile

Into Bucks

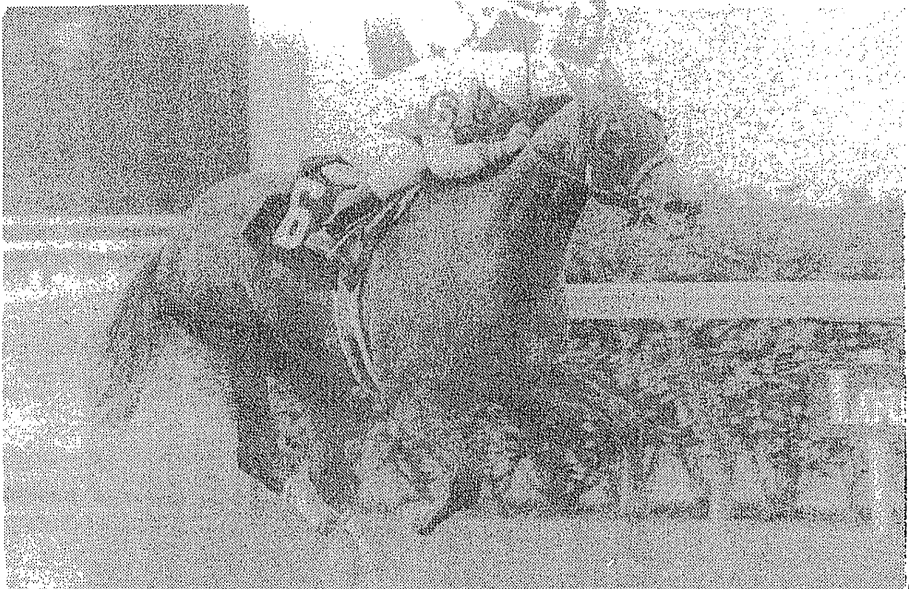
Dk. b. or br. c. 2, by Buckaroo—In Caricature, by Isgala
Br.—Hershe Mortimer J (Fla) 1988 5 2 1 2 \$134,240
Tr.—Dickinson Michael
Lifetime 5 2 1 2 \$134,240
NiedJjr 10 In Reality 77-17 SilvrSunst, IntoBucks, Amrc'sFnc
80Oct88-9Crc 1 1/2 :47 1:12 1:48 11 120 1 1/2 1 1/2 1 1/2 1 1/2
Nied Jjr 3 Foolish Plsr 82-18 IntoBucks, SilvrSunst, ApplingPls
80Oct88-Lunged st.
14Sep88-6Med 1 :47 1:12 1:38 2 118 2 1/2 1 1/2 1 1/2 1 1/2
Krone J A 5 Mdn 85-13 IntoBucks, WileyKnight, CblloDeLs
3Aug88-4Pha 5 1/2 :22 1:45 1:05 1 1/2 118 2 1/2 2 1/2 3 1/2 3 1/2
Madrid A Jr 2 Mdn 92-13 Doc's Leader, TriosPeak, IntoB0ck
6Jly88-3Pha 5f :22 1:46 1:59 2 122 4 1/2 3 1/2 3 1/2 3 1/2
Fitzgerald J 6 Mdn 87-16 Big Karl John, DimLights, IntoB0ck
Nov 2 CD 3f ft :56 1/2 h Oct 17 Crc 5f ft 1:02 1/2 h Oct 4 Crc 4f ft :47 1/2 h Sep 29 Crc 6f ft 1:16 b

Easy Goer

Ch. c. 2, by Alydar—Relaxing, by Buckpasser
Br.—Phipps Ogden (Ky) 1988 5 4 1 0 \$472,500
Tr.—McGaughy Claude III
Lifetime 5 4 1 0 \$472,500
Day P 1 Champagne 91-17 Easy Goer, Is It True, Irish Actor
150Oct88-8Bel 1 :45 1:10 1:34 11 122 2 1/2 2 1/2 1 1/2 1 1/2
Day P 1
10Oct88-8Bel 7f :22 1:45 1:23 1 1/2 122 5 1/2 2 1/2 2 1/2 1 1/2
Day P 6 Cowdin 84-21 Easy Goer, WinnersLaugh, IsItTrue
10Oct88-Grade I
9Sep88-8Bel 6 1/2 :22 1:44 1:15 1 1/2 122 3 1/2 3 1/2 1 1/2 1 1/2
Day P 2 Aw27000 98-16 Easy Goer, Winners Laugh, Icy Jr.
19Aug88-5Sar 7f :22 1:45 1:23 1 1/2 118 3 2 3 1/2 1 1/2
Day P 2 Mdn 89-19 Easy Goer, Is It True, Magic Eagle
19Aug88-Steadied, drv
1Aug88-3Bel 6f :23 1:46 1:11 1 1/2 118 5 1/2 2 1/2 2 1/2 2 1/2
Day P 4 Mdn 81-18 Lorenzoni, Easy Goer, TiaJuaan
Oct 30 CD 5f ft 1:01 1/2 h Oct 24 Bel 4f ft :47 1/2 h Oct 14 Bel 3f ft :35 b Oct 9 Bel 5f sy :59 1/2 b

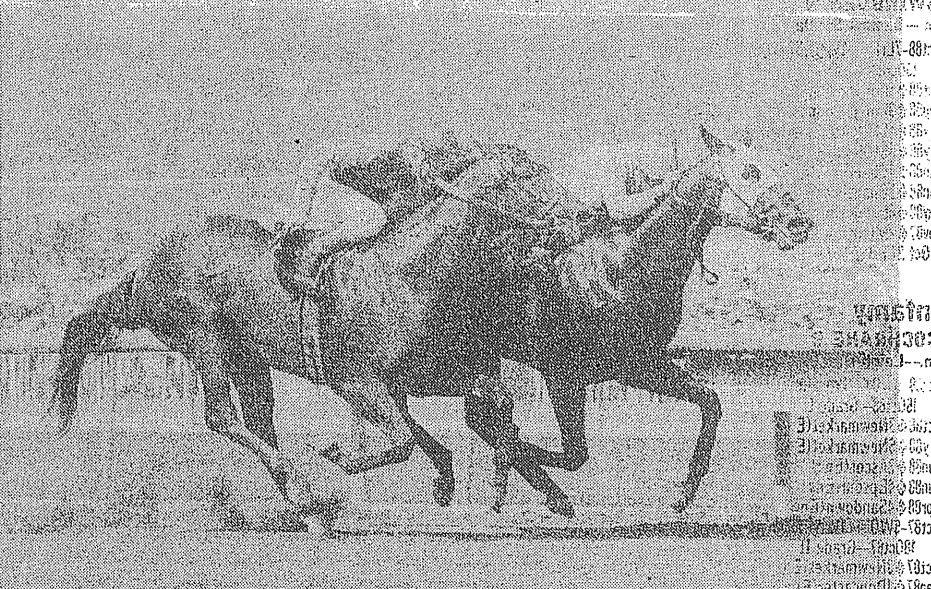
Mountain Ghost

Ro. c. 2, by Full Pocket—Silvertip Mtn, by High Echelon
Br.—Hunter Barbara (Ky) 1988 9 2 1 2 \$191,829
Tr.—Lewis Craig A
Lifetime 9 2 1 2 \$191,829
StnsGL 5 Yng America 72-13 Irish Actor, The Boss, Revive
27Oct88-9Med 1 1/2 :46 1:12 1:44 30 119 6 1/2 6 1/2 10 1/2 10 1/2
27Oct88-Grade I
90Oct88-10Ld 7f :22 1:44 1:24 1 1/2 121 4 1/2 3 1/2 1 1/2 1 1/2
HwrDL 2 Spt Kgs Fut 86-24 Mountain Ghost, Dansil, FortLigh
14Sep88-7Dmr 1 :45 1:10 1:35 26 114 6 1/2 4 1/2 4 1/2 5 1/2
Solis A 11 Dmr Fut 80-14 Music Merci, Bruho, Texian
14Sep88-Grade I
31Aug88-8Dmr 7f :22 1:44 1:23 17 117 3 1/2 4 1/2 2 1/2 2 1/2
Solis A 1 Balboa 85-17 RobAnPlundr, MountainGhost, P0rkt
31Aug88-Grade III
13Aug88-9Mth 6f :22 1:44 1:10 5 122 5 1/2 5 1/2 6 1/2 5 1/2
Krone J A 5 Sapling 81-11 Bio, Truely Colorful, Light MyEus
23Jly88-8Hol 6f :21 1:44 1:08 75 117 7 1/2 6 1/2 3 1/2 3 1/2
Sibille R 5 Hol Juv 90-12 KingGlorious, Bruho, MountainGhost
23Jly88-Grade II
6Jly88-8Hol 6f :22 1:45 1:10 3 117 1 1/2 2 1/2 3 1/2 3 1/2
Solis A 5 Aw33000 85-16 Music Merci, Bruho, MountainGhost
4Jun88-4Hol 5 1/2 :21 1:45 1:04 6 117 2 1/2 2 1/2 2 1/2 1 1/2
Solis A 3 Mdn 91-16 MountainGhost, GretGns, PdsProms
20May88-4Hol 5f :22 1:45 1:07 4 117 6 1/2 4 1/2 4 1/2 4 1/2
Solis A 3 Mdn 86-16 MusicMrci, ShippingTm, PdsProms
Oct 20 SA 7f ft 1:26 h Oct 4 SA 4f ft :46 1/2 hg Sep 28 SA 5f ft 1:00 1/2 h Sep 23 SA 5f ft 1:01 1/2 h



MOUNTAIN GHOST

... captured Louisiana Downs' Sport of Kings Futurity



DOUBLE QUICK

... represents the partnership of Hugh King III and Mel McGaughy

9th Churchill



1 1/2 MILES. (Turf). 5th Running THE BREEDERS' CUP TURF (Grade I). Purse \$2,000,000. 3-year-olds and upward. Weight, 3-year-olds, 122 lbs.; older, 126 lbs. Fillies and mares allowed 3 lbs. Value of race, \$2,000,000. Value to winner \$900,000, second \$450,000, third \$216,000, fourth \$140,000, fifth \$100,000, sixth \$20,000. Nominator Awards: Stallion, winner \$50,000, second \$25,000, third \$12,000; Focal, winner \$50,000, second \$25,000, third \$12,000. Stallion awards will be paid only to the nominators of fully eligible stallions. Owners who supplement horses to Breeders' Cup Day races will be eligible for the Focal Nominator's Award in the case of a 12 per cent supplementary nomination or both the Focal Nominator's Award and the Stallion Nominator's Award in the case of a 20 per cent supplementary nomination. In accordance with the Breeders' Cup/European Breeders' Fund cross-registration agreement, nominator's awards will not be paid to horses eligible through the E.B.F. All unpaid nominator's awards will remain the property of Breeders' Cup Limited.

Coupled—Indian Skimmer and Sarhoob.

Undercut

EDDERY P	122	Ch. c. 3, by Roberto—Feature Price, by Quack	1988 5 0 3 1	\$61,956
Jwn.—Juddmonte Farm		Br.—Glen Hill Farm (Fla)	1987 5 4 1 0	\$91,433
20Oct88-85A	1 1/2 @ 45:1.10:31.48:2fm 5 1/2 120	Tr.—Gregson Edwin	1987 5 4 1 0	\$152,629
12Oct88—Grade II; Bumped		Lifetime 10 4 4 1	Turf 10 4 4 1	\$152,629
6Jly88 @ 3Yr (Scot) 1/4	2:06:3gd 6 117	McCrrn CJ7	Vinte H 84-15 CoxMcClayde, BelAirDncr, Undercut 11	
5Jly88 @ 5Newmarket (Eng) 1/2	2:31:4gd 8 112			
8May88 @ 3Goodwood (Eng) 1/4	2:07:3gd 2 1/3 130			
4Apr88 @ 1Newmarket (Eng) 1/4	1:54:3gd*3-2 131			
6Sep87 @ 5Ascot (Eng) 1	1:41:3gd 6 125			
0Jly87 @ 2Goodwood (Eng) 7f	1:28:2gd *1 126			
9Jly87 @ 1Newmarket (Eng) 7f	1:24:4gd*2-5 128			
5Jun87 @ 3Salisbury (Eng) 6f	1:15:2gd 9-5 123			
0May87 @ 5Goodwood (Eng) 5f	:59:4gd 4 126			
Nov 3 CD @ 4f m :52 b (d)		Oct 7 SA @ 5f m 1:00:4 h (d)	Oct 2 SA 7f ft 1:26:2 h	Sep 26 SA 6f ft 1:42:2 h

Great Communicator

SIBILLE R	126	B. g. 5, by Key to the Kingdom—Blaheen, by Beekeeper	1988 9 4 3 1	\$842,950
Jwn.—Class Act Stable		Br.—Watriss J B (Ky)	1987 14 2 4 4	\$365,430
9Oct88-85A	1 1/2 @ 48:2.00:32.25:1fm*7-5 126	Tr.—Ackel Thad D	1987 14 2 4 4	\$1,221,910
9Oct88—Grade I		Lifetime 40 9 9 7	Turf 29 8 7 5	\$1,221,910
55Sep88-80Mr	1 1/2 @ 50:11.39:12.15:4fm *4 120			
0Aug88-7W0	1 1/2 @ 47:21.36:22:00 fm 5 1/2 126			
20Aug88—Grade I				
8Jun88-86G	1 1/2 @ 50 1.39 2.15:2fm*8-5 120			
18Jun88—Grade II				
0May88-8Hol	1 1/2 @ 47:31.34:31.58:3fm 3 1/2 120			
30May88—Grade I; Head heat				
4Apr88-85A	a 1 1/2 @ 47 2.28:22.51:3gd 6 119			
24Apr88—Grade I				
7Mar88-85A	1 1/2 @ 47:22.02:12.27:1fm 5 126			
27Mar88—Grade I				
5Feb88-85A	1 1/2 @ 47:22.01:12.27:3fm 11 117			
15Feb88—Grade II				
4Jan88-95A	1 1/2 @ 47:31.37:22.02:3fm 12 115			
24Jan88—Grade III				
30Dec87-8Hol	1 1/2 @ 48:2.02:22.27 fm 86 126			
13Dec87—Grade I				
Oct 26 CD @ 7f m 1:39 b (d)		Oct 6 Hol 4f ft :50 h	Oct 29 Sep 29 Hol 6f ft 1:15:3 h	Sep 22 Hol 5f ft 1:02:3 h

Sunshine Forever

CORDERO A JR	122	B. c. 3, by Roberto—Outward Sunshine, by Graustark	1988 11 8 2 1	\$1,582,636
Jwn.—Darby Dan Farm		Br.—Galbreath John W (Ky)	1987 5 M 1 1	\$6,820
30Oct88-7Lr1	1 1/2 @ 47:41.37:42.03 fm*4-5 122	Tr.—Veitch John M	1987 5 M 1 1	\$1,588,356
23Oct88—Grade I		Lifetime 16 8 3 2	Turf 12 8 3 1	\$1,588,356
9Oct88-8Bel	1 1/2 @ 52:12.07:22.33:5f *2 121			
23Oct88—Grade I				
24Sep88-8Bel	1 1/2 @ 49:11.38:32.14:2fm*8-5 120			
24Sep88—Grade I; Brushed, drv				
20Aug88-8W0	1 1/2 @ 47:21.36:22:00 fm 4 118			
20Aug88—Grade I				
10Jly88-8Bel	1 1/2 @ 50:32.07 2.32:1sf *1 114			
30Jly88—Grade I; Came out				
10Jly88-8Bel	1 1/2 @ 50 1.38:2:03 fm*3-5 123			
10Jly88—Grade II				
24Jun88-8Bel	1 1/2 @ 46:41.11 1.41:1fm 9-5 114			
24Jun88—Grade III				
8Jun88-8Bel	1 1/2 @ 45:21.09:11.40:1fm*3-5 112			
2May88-8Bel	1 1/2 @ 47:31.12:31.38:2yl 4 114			
22May88—Grade II; checked				
9May88-8A1	1 1/2 @ 49:41.14:41.53 gd*1-2 115			
Nov 3 CD @ 3f m :38 b (d)		Oct 30 CD @ 3f m :37 b (d)	Oct 21 Lr1 @ 4f m :48 h (d)	Oct 16 Bel @ 3f m :37 b

El Senor

MCCAULEY W H	126	Ro. c. 4, by Valdez—Sunrise Sue, by Grey Dawn II	1988 11 5 4 0	\$409,016
Jwn.—Luro Frances		Br.—Fontainebleau Farm (Ky)	1987 3 M 0 1	\$1,970
60Oct88-8W0	1 1/2 @ 51:32.04:42.29 fm 13 126	Tr.—Wright William W	1987 3 M 0 1	\$409,016
16Oct88—Grade I		Lifetime 14 5 4 1	Turf 11 5 4 0	\$409,016
45Sep88-10LaD	1 1/2 @ 48:11.37:32.14:2fm 7 113			
24Sep88—Grade III				
5Aug88-85Ar	1 1/2 @ 50:22.07:12.46:3sf 4 112			
25Aug88—Grade III				
5Aug88-75Ar	1 1/2 @ 49:31.12:41.54:3fm 3 111			
9Jly88-8Bel	1 1/2 @ 50 1.39:32.16:2fm 7 112			
9Jly88—Grade II				
8Jun88-8Bel	1 1/2 @ 49:21.36:32.13:2fm 18 107			
18Jun88—Grade I				
8May88-8Bel	1 1/2 @ 50:21.39:32.17:2fm*6-5 124			
28May88—Trapped, driving				
5May88-75el	1 1/2 @ 48:12.17:32.17:3fm*6-5 121			
4Apr88-9Kee	a 1 1/2 @ 2.34:3fm 3 113			
3Mar88-8Crc	a 1 1/2 @ 1.49:3fm*6-5 119			
Nov 1 Bel 6f ft 1:17:3 b		Oct 26 Bel 6f ft 1:14:3 h	Oct 15 W0 @ 3f m :38 b	Oct 11 Bel 6f ft 1:16 b

Frankly Perfect

SWINBURN W R	122	Ch. c. 3, by Perrault—Franca, by Viceregal	1988 8 2 2 2	\$260,695
Jwn.—Summa Stable		Br.—Summa Stable (Ky)	1987 1 M 0 1	\$2,478
30Oct88-7Lr1	1 1/2 @ 47:41.37:42.03 fm 17 122	Tr.—Pease Jonathan	1987 1 M 0 1	\$263,473
23Oct88—Grade I		Lifetime 9 2 2 3	Turf 9 2 2 3	\$263,473
20Oct88 @ 5Longchamp (Fra)	a 1 1/2:2:27:1gd 75 123			
15Sep88 @ 3Longchamp (Fra)	a 1 1/2:2:34:3gd 12 116			
4Jly88 @ 4StCloud (Fra)	a 1 1/2:2:40:1yl 3 117			
3Jly88 @ 5StCloud (Fra)	a 1 1/2:2:36:1gd 5 121			
2Jun88 @ 4Chantilly (Fra)	a 1 1/2:2:28 2 121			
2Jun88 @ 2Chantilly (Fra)	a 1 1/2:2:34:2sf 2 128			
2May88 @ 6Longchamp (Fra)	a 1 1/2:2:10:3yl 4 128			
0Nov87 @ 2Maffitt (Fra)	a 1 1/2:1:43 sf 10 123			
Oct 21 Lr1 @ 3f m :36 b (d)				

Infamy

COCHRANE R	123	Gr. f. 4, by Shirley Heights—Seriemia, by Petingo	1988 6 2 3 1	\$652,562
Jwn.—Leigh G		Br.—Hesmonds Stud Ltd (Ire)	1987 6 5 0 1	\$91,529
30Oct88-8W0	1 1/2 @ 51:32.04:42.29 fm *2 123	Tr.—Cumani Luca M	1987 6 5 0 1	\$744,947
16Oct88—Grade I		Lifetime 13 7 3 2	Turf 13 7 3 2	\$744,947
10Oct88 @ 3Newmarket (Eng)	1 1/2:2:05:2gd 6 129			
1Jly88 @ 5Newmarket (Eng)	1 1/2:2:31:4gd 8-5 126			
7Jun88 @ 2Ascot (Eng)	1 1/2:2:30:1gd *2 121			
2Jun88 @ 4Epsom (Eng)	1 1/2:2:34:4gd 4 123			
3Apr88 @ 4Sandown (Eng)	1 1/2:2:14:1gd 5 124			
30Oct87-5W0	1 1/2 @ 50 1.40:32.05:2gd 4 117			
18Oct87—Grade II				
30Oct87 @ 3Newmarket (Eng)	1 1/2:2:08:3fm 5 119			
1Sep87 @ 1Doncaster (Eng)	a 1 1/2:2:09:4gd*2-3 133			
1Aug87 @ 5Chepstow (Eng)	1 1/2:2:08 gd*2-3 126			
Nov 3 CD @ 4f m :52 b (d)		Oct 14 W0 @ 4f m :50 b	Oct 13 W0 @ 2f m :26 b	

Triptych

PINCAY L JR	123	B. m. 6, by Riverman—Trillion, by Hail to Reason	1988 7 2 0 3	\$233,488
Own.—Brant P M		Br.—Hunt N B & Stephenson E L (Ky)	1987 10 6 0 3	\$1,362,840
20Oct88 @ 5Longchamp (Fra)	a 1 1/2:2:27:1gd 21 127	Tr.—Biancone Patrick L	1987 10 6 0 3	\$2,652,246
18Sep88 @ 5Longchamp (Fra)	a 1 1/2:2:04:4gd*4-5 129			
18Sep88—Placed first through disqualification		Lifetime 40 14 5 11	Turf 39 14 5 11	\$2,652,246
4Sep88 @ 4PhoenixPk (Ire)	1 1/2:2:06:2gd 6 129			
20Aug88-7W0	1 1/2 @ 47:21.36:22:00 fm *2 121			
20Aug88—Grade I				
2Jly88 @ 4Sandown (Eng)	1 1/2:2:06 gd 3 130			
2Jun88 @ 4Epsom (Eng)	1 1/2:2:34:4gd*7-5 123			
1May88 @ 3Longchamp (Fra)	a 1 1/2:2:18:3gd*1-2 124			
29Nov87 @ 9Tokyo (Japan)	a 1 1/2:2:24:4fm*4-5 121			
15Nov87 @ 6Tokyo (Japan)	a 1 1/2:1:46:4fm*1-5 121			
17Oct87 @ 2Newmarket (Eng)	1 1/2:2:10:4gd*6-5 126			
Nov 2 CD @ 6f m 1:24 b (d)				

Indian Skimmer

ROBERTS M	123	Ro. f. 4, by Storm Bird—Nobiliare, by Vaguely Noble	1988 6 3 1 1	\$635,896
Own.—Mohammed Shiekh		Br.—Ashford Stud & Worswick R (Ky)	1987 5 5 0 0	\$369,913
15Oct88 @ 2Newmarket (Eng)	1 1/2:2:10:2gd*1-2 126	Tr.—Cecil Henry	1987 5 5 0 0	\$1,006,313
10Oct88 @ 3Newmarket (Eng)	1 1/2:2:05:2gd*2-5 132			
4Sep88 @ 4PhoenixPk (Ire)	1 1/2:2:06:2gd 2 129			
16Aug88 @ 3York (Eng)	1 1/2:2:06:1gd 3 129			
16Aug88—Placed second through disqualification				
2Jly88 @ 4Sandown (Eng)	1 1/2:2:06 gd 4 130			
31May88 @ 3Sandown (Eng)	1 1/2:2:10 gd*9-5 126			
14Jun87 @ 4Chantilly (Fra)	a 1 1/2:2:11:2sf *4-5 128			
24May87 @ 3Longchamp (Fra)	a 1 1/2:2:10 gd*1-2 128			
12May87 @ 4York (Eng)	1 1/2:2:12:2gd*1-2 120			
30Apr87 @ 2Newmarket (Eng)	1 1/2:2:04:1gd*9-5 122			

Fajar Tango

SANTOS J A	122	Dk. b. or br. c. 3, by In Fajar—Last Tango, by Luthier	1988 5 2 1 0	\$263,107
Own.—Buckram Oak Farms		Br.—Fustok M (Fra)	1987 4 2 0 1	\$104,654
20Oct88 @ 5Longchamp (Fra)	a 1 1/2:2:27:1gd 14 123	Tr.—Mikhalides George E	1987 4 2 0 1	\$367,761
11Sep88 @ 3Longchamp (Fra)	a 1 1/2:2:34:3gd 11 130			
16Aug88 @ 3York (Eng)	1 1/2:2:06:1gd 16 122			
26Jun88 @ 3Longchamp (Fra)	a 1 1/2:2:05:4gd 6 128			
29May88 @ 5Longchamp (Fra)	a 1 1/2:1:54 yl 8 128			
11Oct87 @ 3Longchamp (Fra)	a 1 1/2:1:45:1sf 10 123			
13Sep87 @ 2Longchamp (Fra)	a 1 1/2:1:41:1gd 13 121			
24Aug87 @ 4Deauville (Fra)	a 7f 1:28:3yl 10 123			
17Jly87 @ 2Compiègne (Fra)	a 7f 1:28:3yl *4-5 117			
Nov 2 CD @ 7f m 1:40:3 b (d)				

Milesius

ANTLEY C W	126	B. c. 4, by Alleged—Mindy Malone, by Tropical Breeze	1988 10 2 2 2	\$310,137
Own.—Payson Virginia K		Br.—Payson Virginia K (Ky)	1987 12 3 4 1	\$189,134
16Oct88-8W0	1 1/2 @ 51:32.04:42.29 fm 4 126	Tr.—Lundy Richard J	1987 12 3 4 1	\$336,047
16Oct88—Grade I		Lifetime 23 5 6 3	Turf 13 3 2 1	\$336,047
16Sep88-9MEd	1 1/2 @ 48:21.38 2.14:3fm 8 126			
16Sep88—Grade III				
45Sep88-8Bel	1 1/2 @ 47:4 1.37:4 2:04:2sy 3 112			
45Sep88—Grade I				
14Aug88-85Ar	1 1/2 @ 47 1.09:41.46:4fm 9 111			
14Aug88—Grade I				
30Jly88-8Bel	1 1/2 @ 50:32.07 2.32:1sf 7 113			
30Jly88—Grade I				
9Jly88-8Bel	1 1/2 @ 50 1.39:32.16:2fm 3 113			
9Jly88—Grade II; Bore out				
18Jun88-8Bel	1 1/2 @ 49:21.36:32.13:2fm 3 115			
18Jun88—Grade I				
3Jun88-8Bel	1 1/2 @ 45:21.09:21.41 fm 7 117			
20May88-8Pm	1 1/2 @ 49:2 1.40:2 2:45 m *1 120			
20May88—Grade II				
3				

10th Churchill



1 1/4 MILES. (1.59%) 5th Running THE BREEDERS' CUP CLASSIC (Grade I). Purses \$3,000,000. 3-year-olds and upward. Weight, 3-year-olds, 122 lbs.; older, 126 lbs. Fillies and mares allowed 3 lbs. Value of race \$3,000,000. Value to winner \$1,350,000, second \$675,000, third \$324,000, fourth \$210,000, fifth \$150,000, sixth \$30,000. Nominator Awards: Stallion, winner, \$75,000, second \$37,500, third \$18,000; Foal, winner \$75,000, second \$37,500, third \$18,000. Stallion awards will be paid only to the nominators of fully eligible stallions. Owners who supplement horses to Breeders' Cup Day races will be eligible for the Foal Nominator's Award in the case of a 12 per cent supplementary nomination or both the Foal Nominator's Award and the Stallion Nominator's Award in the case of a 20 per cent supplementary nomination. In accordance with the Breeders' Cup/European Breeders' Fund cross-registration agreement, nominator's awards will not be paid to horses eligible through the E.B.F. All unpaid nominator's awards will remain the property of Breeders' Cup Limited.

Coupled—Personal Flag and Seeking the Gold.

Waquoit *

Table listing Waquoit horses including Santos J A, owned by Federico J et al, with race dates and results.

Slew City Slew

Table listing Slew City Slew horses including Pincay L Jr, owned by Allen & Tayhill Stable, with race dates and results.

Forty Niner *

Table listing Forty Niner horses including Krone J A, owned by Claiborne Farm, with race dates and results.

Lively One

Table listing Lively One horses including Delahoussaye E, owned by Sikura John G lessee, with race dates and results.

Alysheba

Table listing Alysheba horses including McCarron C J, owned by Scharbauer Dorothy & Pam, with race dates and results.

Cutlass Reality

Table listing Cutlass Reality horses including Stevens G L, owned by Crash & Hankoff, with race dates and results.

Cryptoclearance *

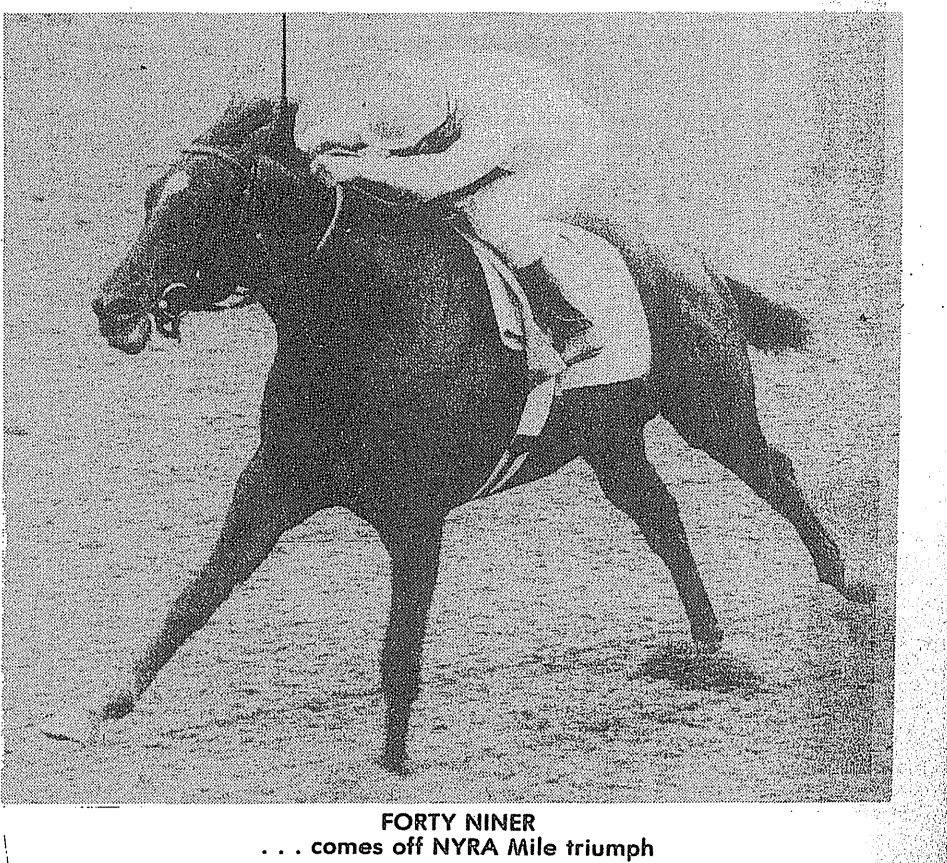
Table listing Cryptoclearance horses including Perret C, owned by Teinowitz P, with race dates and results.

Personal Flag *

Table listing Personal Flag horses including Cordero A Jr, owned by Phipps O, with race dates and results.

Seeking the Gold

Table listing Seeking the Gold horses including Day P, owned by Phipps O, with race dates and results.



FORTY NINER ... comes off NYRA Mile triumph