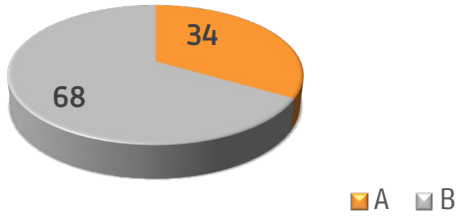
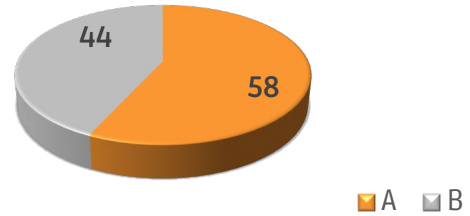


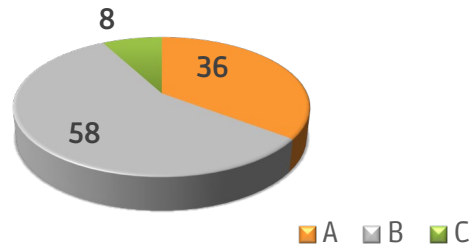
Question 1: Winner
A = TAM, B = KC



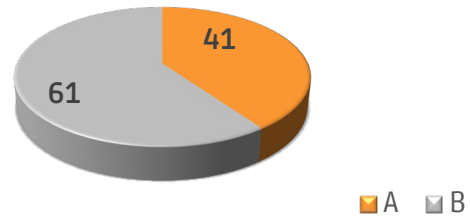
Question 2: Point Total
A = Over 56.5, B = Under 56.5



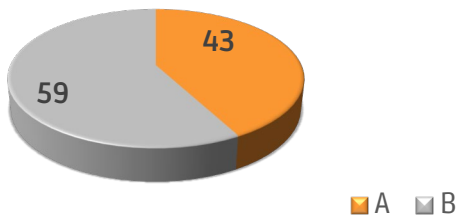
Question 3: Halftime Leader
A = TAM, B = KC, C = Tied



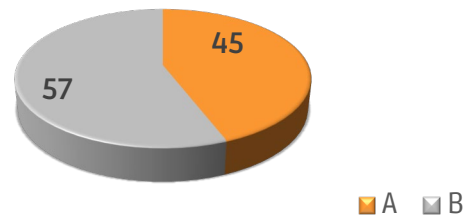
Question 4: Coin Toss
A = Heads, B = Tails



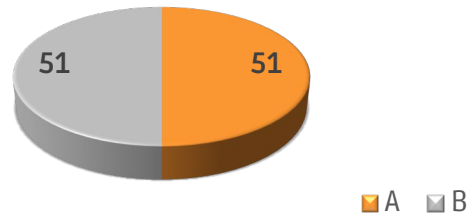
Question 5: Missed Xtra Point
A = Yes, B = No



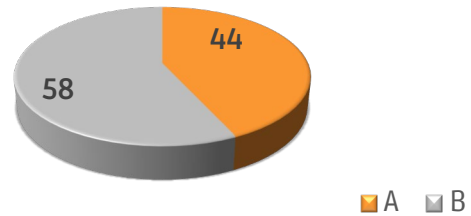
Question 6: Commits First Penalty
A = TAM, B = KC



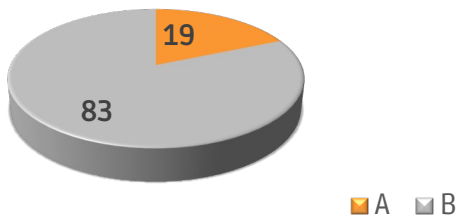
Question 7: Team First Points
A = TAM, B = KC



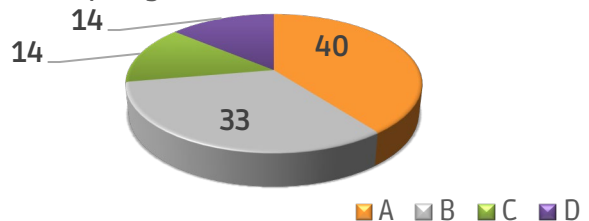
Question 8: First Team to 10 Points
A = TAM, B = KC



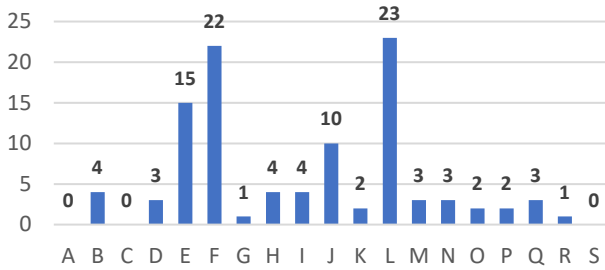
Question 9: Tom Brady Run in a TD
A = Yes, B = No



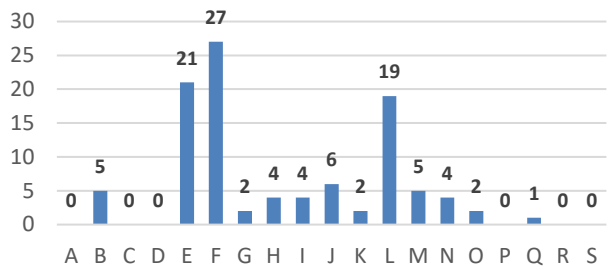
Question 10: First Penalty
A = Holding, B = False Start, C = PI,
D = Anything Else



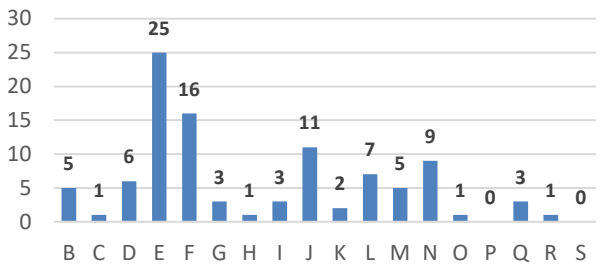
Question 11: Player to Score 1st TD



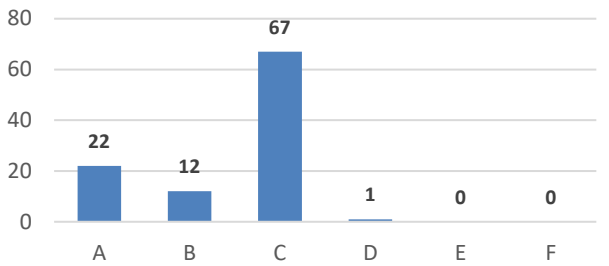
Question 12: Player to Score 2nd TD



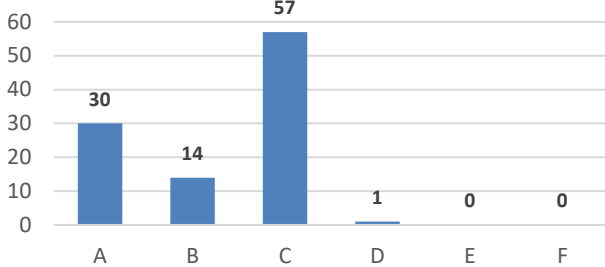
Question 13: Player to Score 1st TD 2H



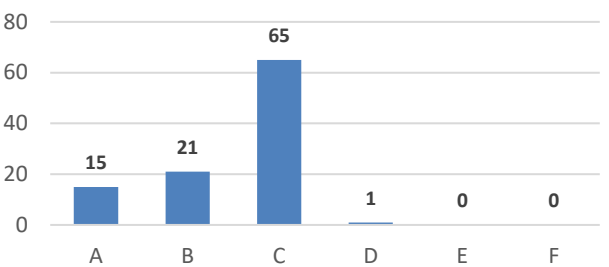
Question 14: First Points Scored Will Be



Question 15: 2nd Points Scored Will Be

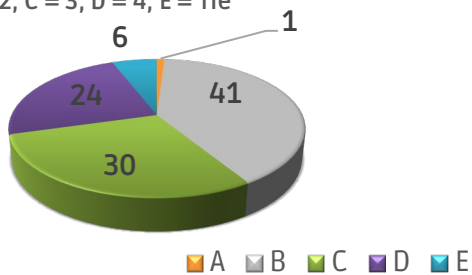


Question 16: 1st Points scored 2H Will Be



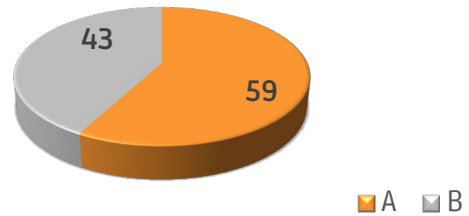
Question 17: Highest Scoring Qtr

A = 1, B = 2, C = 3, D = 4, E = Tie



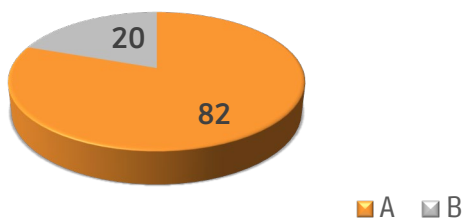
Question 18: Shortest TD Will Be

A = Over 1.5, B = Under 1.5



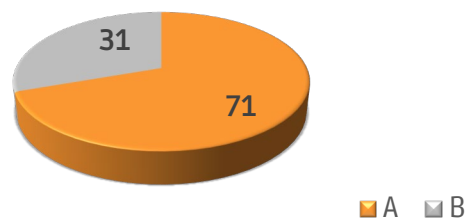
Question 19: Score in Final Min of 1H

A = Yes, B = No

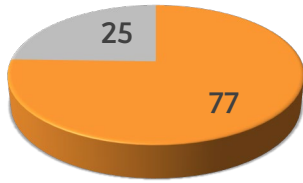


Question 20: Score in 1st 5 Min of 2H

A = Yes, B = No

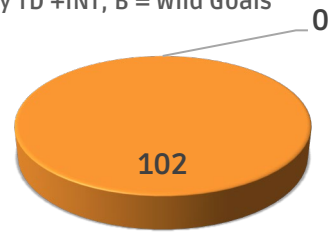


Question 21: 2H Opening kickoff
A = Touchback, B = Not a Touchback



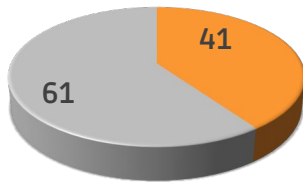
A B

Question 22: Who Will Have More
A = Brady TD +INT, B = Wild Goals



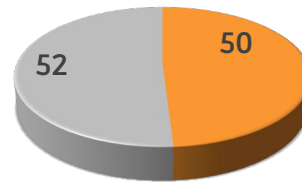
A B

Question 23: Who Will Have More
A = T Hill Rec Yards; B = Utah Jazz Pts



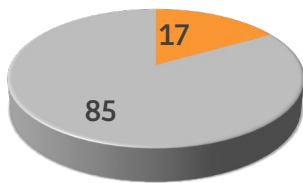
A B

Question 24: Who Will Have More
A = KC Pts; B = Paul George Pts + Rbnds



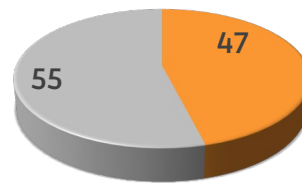
A B

Question 25: What Will Be Higher
A = T Kelce Rec Yds; B = Ps GTwn/Villva



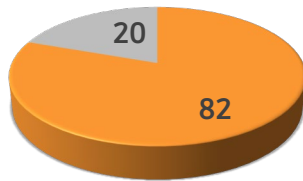
A B

Question 26: What Will Be More
A = Shortest FG, B = Giannis Pts



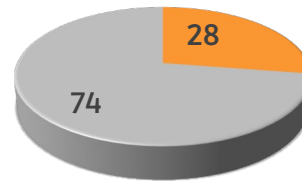
A B

Question 27: What Will Be Higher
A = Brady Long Comp; B = Brown Pts+Reb



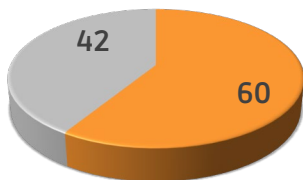
A B

Question 28: More Receiving Yards
A = Hard/Watk; B = Evans/Johnson



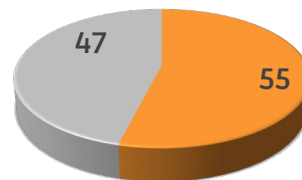
A B

Question 29: What Will Be Higher?
A = KC Pts, B = Highest Win at Santa Anita



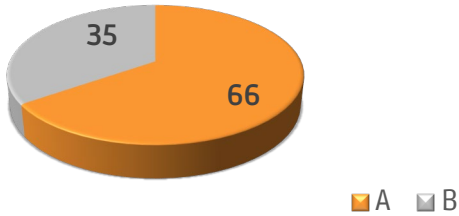
A B

Question 30: Total Sacks Both Teams
A = Over 4.5, B = Under 4.5

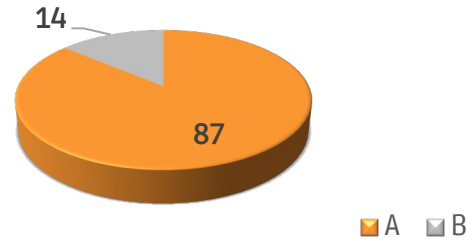


A B

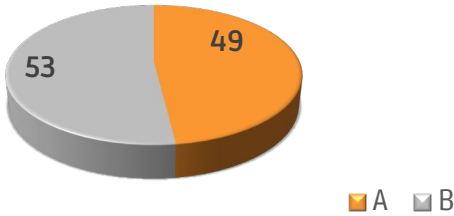
Question 31: Mahomes Passing Yards
A = Over 329.5, B = Under 329.5



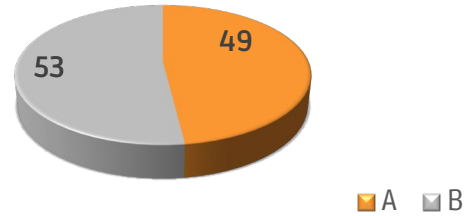
Question 32: Mahomes Passing TD's
A = Over 2.5, B = Under 2.5



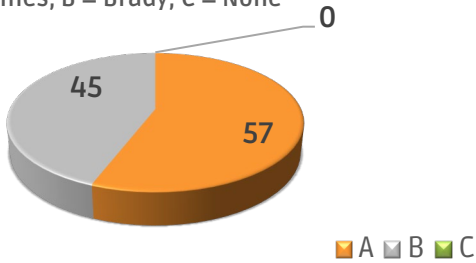
Question 33: Brady Passing Yards
A = Over 300.5, B = Under 300.5



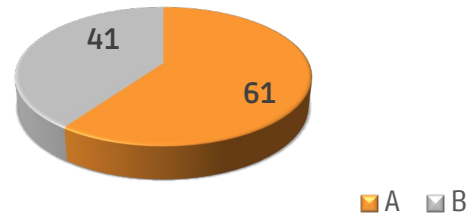
Question 34: Brady TD Passes
A = Over 2.5, B = Under 2.5



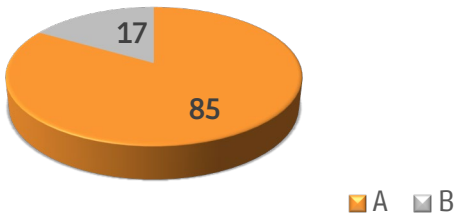
Question 35: Who Will Throw TD First
A = Mahomes, B = Brady, C = None



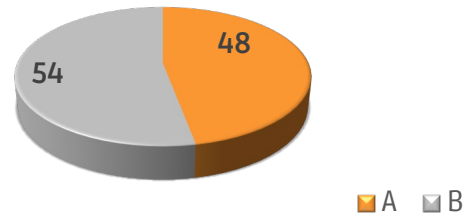
Question 36: Tyreek Hill Rec Yards
A = Over 102.5, B = Under 102.5



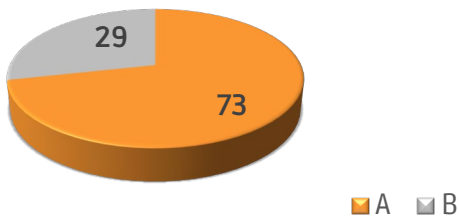
Question 37: Game Tied After 0-0
A = Yes, B = No



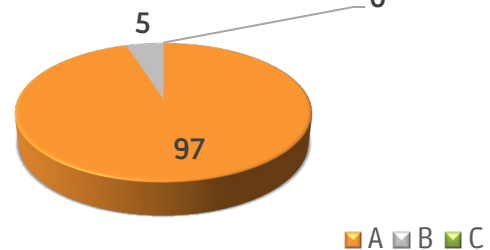
Question 38: # of Players to Throw a Pass
A = Over 2.5, B = Under 2.5



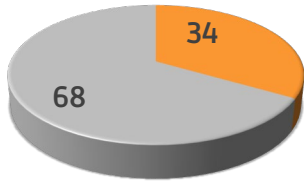
Question 39: TD in all 4 Quarters
A = Yes, B = No



Question 40: Longest Field Goal
A = Over 41.5, B = Under 41.5, C = No FG

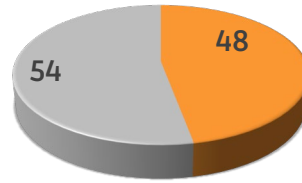


Question 41: Kick/Punt Return or Def TD
A = No, B = Yes



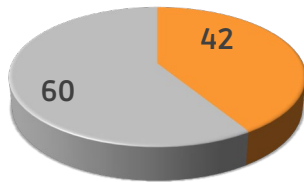
A B

Question 42: 50 Yard FG Made
A = Yes, B = No



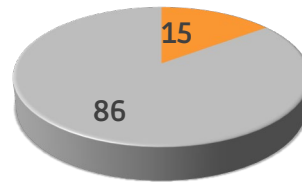
A B

Question 43: On-side Kick Attempted
A = Yes, B = No



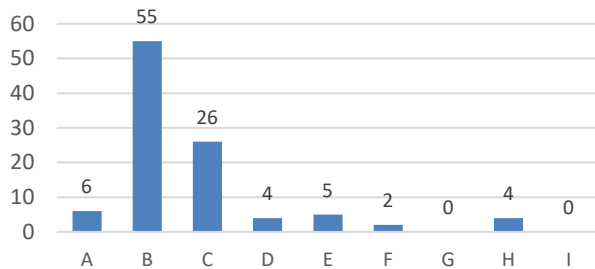
A B

Question 44: On-side Kick recovered
A = Yes, B = No

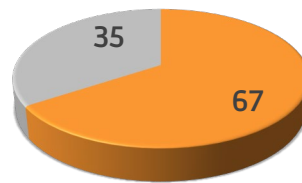


A B

Question 45: Super Bowl MVP

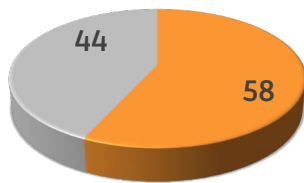


Question 46: Two-point Conversion
A = Yes, B = No



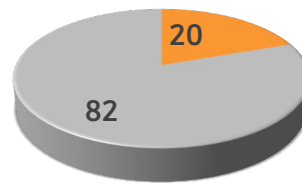
A B

Question 47: Margin 7 or Less in Last Mn
A = Yes, B = No



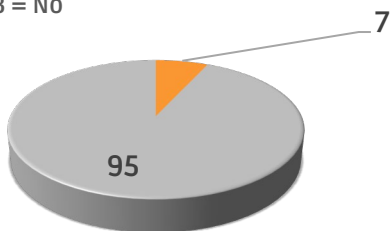
A B

Question 48: Margin 3 or Less in Last Mn
A = Yes, B = No



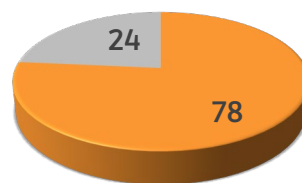
A B

Question 49: Margin of Victory Exactly 3
A = Yes, B = No



A B

Question 50: Last Play Kneel Down
A = Yes, B = No



A B