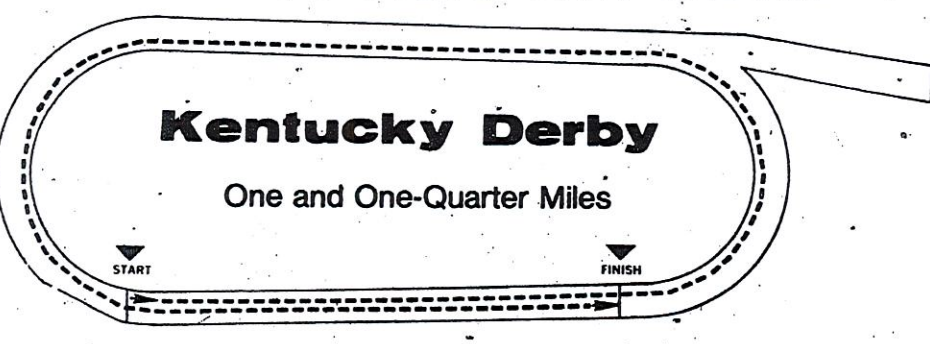


# 107th-Kentucky Derby-107th

## Route the Field Will Travel



### 8th Churchill

**1 1/4 MILES. (159%) 107th Running KENTUCKY DERBY SCALE WEIGHT (Grade I).** \$200,000 Added (plus \$20,000 from KTDF). 3-year-olds. By subscription of \$100 which covers nomination for both the Kentucky Derby and Derby Trial. All nomination fees to Derby winner. \$4,000 to pass entry box Thursday, April 30, \$3,500 additional to start. \$200,000 added, of which: \$50,000 to second, \$25,000 to third, \$12,500 to fourth. \$100,000 guaranteed to the winner (to be divided equally in the event of a dead heat.) Weight, 126 lbs. Starters to be named through the entry box Thursday, April 30, at the time of closing. The maximum number of starters for the Kentucky Derby will be limited to twenty. In the event more than twenty entries pass through the entry box at the usual time of closing, the twenty starters will be determined at that time with preference given to those that have accumulated the highest earnings. For those that enter and are eliminated under this condition, the nomination fee and the fee to pass through the entry box, will be refunded. The owner of the winner to receive a gold trophy. (Closed with 432 nominations.)

Coupled—Golden Derby and Proud Appeal; Noble Nashua and Wayward Lass.

### Splendid Spruce

**Own.—Surf and Turf Stable 126**

12Apr81-8SA	1 1/2-453	1:10 1:49 ft	15	120	65	52	23	12
23Apr81-7Kee	1 1/2-46	1:10 1:44 ft	48	116	21	21	23	20
14Apr81-7Kee	1 1/2-462	1:13 1:47 1/2 ft	23	117	27	11	18	120
28Mar81-8Lat	1 1/2-47	1:11 1:42 1/2 ft	63	117	44	59	67	64
12Feb81-8SA	1 1/2-47	1:11 1:42 1/2 ft	63	117	44	59	67	64
31Jan81-7SA	1 1/2-471	1:11 1:44 1/2 gd	84	116	31	34	43	54
17Jan81-7SA	1 1/2-462	1:10 1:35 1/2 ft	51	117	54	76	54	47
10Sep80-8Dmr	1 1/2-462	1:11 1:35 1/2 ft	51	117	54	76	54	47
27Aug80-3Dmr	1 1/2-46	1:11 1:37 1/2 ft	31	115	54	43	43	21
18Aug80-7Dmr	1 1/2-461	1:12 1:38 1/2 ft	38	117	42	1	11	11
19July80-1Hol	6f-221	1:42 1:10 ft	11	122	95	118	107	107
3July80-1Hol	6f-221	1:45 1:10 1/2 ft	9	116	64	57	2	12

Apr 29 CD 4f: 59 1/2 h    Apr 24 CD 7f: 1:29 1/2 h    Apr 18 SA 4f: 46 1/2 h    Apr 9 SA 5f: 58 1/2 h

**B. c. 3, by Big Spruce—Splendid Spruce, by Damascus**

**Br.—Webb Lillie F (Ky) 1981 6 2 1 0 \$219,100**

**Tr.—Knight Chay R 1980 5 2 1 0 \$23,500**

12Apr81-8SA	1 1/2-453	1:10 1:49 ft	15	120	65	52	23	12
23Apr81-7Kee	1 1/2-46	1:10 1:44 ft	48	116	21	21	23	20
14Apr81-7Kee	1 1/2-462	1:13 1:47 1/2 ft	23	117	27	11	18	120
28Mar81-8Lat	1 1/2-47	1:11 1:42 1/2 ft	63	117	44	59	67	64
12Feb81-8SA	1 1/2-47	1:11 1:42 1/2 ft	63	117	44	59	67	64
31Jan81-7SA	1 1/2-471	1:11 1:44 1/2 gd	84	116	31	34	43	54
17Jan81-7SA	1 1/2-462	1:10 1:35 1/2 ft	51	117	54	76	54	47
10Sep80-8Dmr	1 1/2-462	1:11 1:35 1/2 ft	51	117	54	76	54	47
27Aug80-3Dmr	1 1/2-46	1:11 1:37 1/2 ft	31	115	54	43	43	21
18Aug80-7Dmr	1 1/2-461	1:12 1:38 1/2 ft	38	117	42	1	11	11
19July80-1Hol	6f-221	1:42 1:10 ft	11	122	95	118	107	107
3July80-1Hol	6f-221	1:45 1:10 1/2 ft	9	116	64	57	2	12

Apr 29 CD 4f: 59 1/2 h    Apr 24 CD 7f: 1:29 1/2 h    Apr 18 SA 4f: 46 1/2 h    Apr 9 SA 5f: 58 1/2 h

### Golden Derby

**Own.—Lehmann F E & Gaines J R 126**

23Apr81-7Kee	1 1/2-472	1:11 1:51 1/2 ft	*1-26	121	23	2nd	22	33
14Apr81-7Kee	1 1/2-464	1:10 1:44 1/2 ft	16	113	11	11	11	33
28Mar81-8Lat	1 1/2-46	1:11 1:38 ft	21	122	33	51	62	86
6Sep80-8AP	7f-221	1:44 1:23 1/2 ft	3	122	64	35	68	81
20Aug80-8AP	6f-222	1:46 1:13 gd	*2-36	124	11	1st	21	31
21July80-8Bel	6f-222	1:46 1:12 1/2 ft	3	122	21	1st	11	11
28Jun80-8CD	5f-222	1:44 1:04 1/2 ft	4	125	23	2	12	11
31May80-8CD	5f-221	1:45 1:09 ft	5	117	23	2	11	11
7May80-7Spt	4f-212	1:45 1:09 ft	7	112	5	21	3	3
23Apr80-7Kee	4f-222	1:46 1:09 ft	7	116	6	1st	3	3

Apr 29 CD 4f: 51 h    Apr 22 Kee 3f: 39 1/2 h    Apr 20 Kee 4f: 48 1/2 h    Apr 13 Kee 5f: 58 h

**Ro. c. 3, by Master Derby—Old Goldie, by Young Emperor**

**Br.—Lehmann Frederick E (Ky) 1981 3 0 2 0 \$23,067**

**Tr.—Adams William E 1980 7 0 0 2 \$78,292**

23Apr81-7Kee	1 1/2-472	1:11 1:51 1/2 ft	*1-26	121	23	2nd	22	33
14Apr81-7Kee	1 1/2-464	1:10 1:44 1/2 ft	16	113	11	11	11	33
28Mar81-8Lat	1 1/2-46	1:11 1:38 ft	21	122	33	51	62	86
6Sep80-8AP	7f-221	1:44 1:23 1/2 ft	3	122	64	35	68	81
20Aug80-8AP	6f-222	1:46 1:13 gd	*2-36	124	11	1st	21	31
21July80-8Bel	6f-222	1:46 1:12 1/2 ft	3	122	21	1st	11	11
28Jun80-8CD	5f-222	1:44 1:04 1/2 ft	4	125	23	2	12	11
31May80-8CD	5f-221	1:45 1:09 ft	5	117	23	2	11	11
7May80-7Spt	4f-212	1:45 1:09 ft	7	112	5	21	3	3
23Apr80-7Kee	4f-222	1:46 1:09 ft	7	116	6	1st	3	3

Apr 29 CD 4f: 51 h    Apr 22 Kee 3f: 39 1/2 h    Apr 20 Kee 4f: 48 1/2 h    Apr 13 Kee 5f: 58 h

### Partez

**Own.—Davis E & Greene Mr-Mrs H 126**

12Apr81-8SA	1 1/2-453	1:10 1:49 ft	91	120	53	62	55	67
5Apr81-4SA	1 1/2-451	1:09 1:47 1/2 ft	*5-114	114	13	13	13	19
21Mar81-8SA	1 1/2-461	1:11 1:43 1/2 gd	31	114	43	3rd	3rd	21
19Mar81-8SA	1 1/2-459	1:10 1:36 ft	16	116	99	81	81	71
11Mar81-7SA	1 1/2-462	1:13 1:47 1/2 ft	39	120	31	36	28	20
15Nov80-8SA	1 1/2-463	1:11 1:43 1/2 ft	*2-118	42	31	43	31	17

15Nov80—Run in two divisions 8th & 9th races.

29Oct80-8SA	7f-214	1:44 1:23 ft	63	117	54	55	52	11
17Oct80-7SA	1 1/2-454	1:12 1:38 ft	*9-120	23	21	13	2nd	2nd
10Sep80-8Dmr	1 1/2-462	1:11 1:36 1/2 ft	22	114	97	68	43	44
27Aug80-8Dmr	1 1/2-46	1:11 1:37 1/2 ft	63	115	31	54	58	31
3Aug80-10Dmr	1 1/2-474	1:12 1:37 1/2 ft	8-5	118	32	44	21	11
3July80-1Hol	6f-221	1:45 1:10 1/2 ft	15	116	1st	11	11	31
24Jun80-1Hol	5f-221	1:45 1:09 ft	5	115	42	41	56	57

Apr 20 Kee 5f: 1:01 h    Apr 19 SA 3f: 34 1/2 h    Apr 13 SA 3f: 35 1/2 h    Mar 31 SA 5f: 1:01 1/2 h (d)

**B. c. 3, by Quack—Lady Marguery, by Tim Tam**

**Br.—Noonan-Runnymede Farm (Ky) 1981 5 1 2 0 \$27,900**

**Tr.—Lukas D Wayne 1980 8 2 1 2 \$77,621**

12Apr81-8SA	1 1/2-453	1:10 1:49 ft	91	120	53	62	55	67
5Apr81-4SA	1 1/2-451	1:09 1:47 1/2 ft	*5-114	114	13	13	13	19
21Mar81-8SA	1 1/2-461	1:11 1:43 1/2 gd	31	114	43	3rd	3rd	21
19Mar81-8SA	1 1/2-459	1:10 1:36 ft	16	116	99	81	81	71
11Mar81-7SA	1 1/2-462	1:13 1:47 1/2 ft	39	120	31	36	28	20
15Nov80-8SA	1 1/2-463	1:11 1:43 1/2 ft	*2-118	42	31	43	31	17

15Nov80—Run in two divisions 8th & 9th races.

29Oct80-8SA	7f-214	1:44 1:23 ft	63	117	54	55	52	11
17Oct80-7SA	1 1/2-454	1:12 1:38 ft	*9-120	23	21	13	2nd	2nd
10Sep80-8Dmr	1 1/2-462	1:11 1:36 1/2 ft	22	114	97	68	43	44
27Aug80-8Dmr	1 1/2-46	1:11 1:37 1/2 ft	63	115	31	54	58	31
3Aug80-10Dmr	1 1/2-474	1:12 1:37 1/2 ft	8-5	118	32	44	21	11
3July80-1Hol	6f-221	1:45 1:10 1/2 ft	15	116	1st	11	11	31
24Jun80-1Hol	5f-221	1:45 1:09 ft	5	115	42	41	56	57

Apr 20 Kee 5f: 1:01 h    Apr 19 SA 3f: 34 1/2 h    Apr 13 SA 3f: 35 1/2 h    Mar 31 SA 5f: 1:01 1/2 h (d)

### Double Sonic

**Own.—Elias F & L 126**

23Apr81-7Kee	1 1/2-472	1:11 1:51 1/2 ft	17	121	101	81	53	43
22Mar81-9Hia	1 1/2-47	1:10 1:49 1/2 ft	61	122	67	67	68	35
13Mar81-8Agu	7f-22	1:44 1:22 1/2 ft	*1-3	121	107	101	45	41
4Feb81-9GP	7f-223	1:45 1:23 1/2 ft	14	122	312	416	583	44
3Jan81-9Crc	1 1/2-472	1:12 1:46 1/2 ft	14	121	121	914	511	11
20Dec80-9Crc	1 1/2-47	1:12 1:46 1/2 ft	14	117	914	75	53	32

20Dec80—Placed second through disqualification.

6Dec80-9Crc	1 1/2-484	1:13 1:46 1/2 ft	31	117	108	714	612	583
15Nov80-9Crc	1 1/2-472	1:13 1:46 1/2 ft	*3-5	119	69	59	46	23
1Nov80-9Crc	1 1/2-464	1:13 1:45 1/2 ft	4	116	717	77	45	37
11Oct80-7Crc	1 1/2-48	1:14 1:41 1/2 ft	*2-114	510	47	10	47	12

11Oct80—Run in Two Divisions: 7th & 9th Races.

10Oct80-7Crc	1 1/2-482	1:14 1:42 ft	31	114	44	41	43	12
8Sep80-9Crc	1 1/2-491	1:15 1:47 1/2 ft	6	116	52	63	1st	13
29Aug80-8Crc	6f-224	1:46 1:12 ft	7	118	87	69	515	514
20Aug80-8Crc	6f-222	1:46 1:13 1/2 ft	20	118	88	71	613	493
2Aug80-3Crc	6f-223	1:47 1:13 1/2 ft	22	117	99	99	32	2nd

2Aug80—Place first through disqualification.

23July80-5Crc	5f-23	1:46 1:53 1/2 ft	17	116	101	915	815	817
12July80-6Crc	5f-23	1:47 1:01 1/2 ft	28	116	911	811	65	64

Apr 22 Kee 3f: 36 1/2 h    Apr 16 Kee 1f: 1:42 h    Mar 27 Crc 3f: 37 1/2 h    Mar 21 Crc 1f: 1:43 h

**Ro. c. 3, by Nodouble—Eloquent Es, by Palestinian**

**Br.—Elias Brothers Farm (Fla) 1981 5 1 0 1 \$114,907**

**Tr.—Krajchak George 1980 12 4 2 1 \$53,001**

23Apr81-7Kee	1 1/2-472	1:11 1:51 1/2 ft	17	121	101	81	53	43
22Mar81-9Hia	1 1/2-47	1:10 1:49 1/2 ft	61	122	67	67	68	35
13Mar81-8Agu	7f-22	1:44 1:22 1/2 ft	*1-3	121	107	101	45	41
4Feb81-9GP	7f-223	1:45 1:23 1/2 ft	14	122	312	416	583	44
3Jan81-9Crc	1 1/2-472	1:12 1:46 1/2 ft	14	121	121	914	511	11
20Dec80-9Crc	1 1/2-47	1:12 1:46 1/2 ft	14	117	914	75	53	32

20Dec80—Placed second through disqualification.

6Dec80-9Crc	1 1/2-484	1:13 1:46 1/2 ft	31	117	108	714	612	583
15Nov80-9Crc	1 1/2-472	1:13 1:46 1/2 ft	*3-5	119	69	59	46	23
1Nov80-9Crc	1 1/2-464	1:13 1:45 1/2 ft	4	116	717	77	45	37
11Oct80-7Crc	1 1/2-48	1:14 1:41 1/2 ft	*2-114	510	47	10	47	12

11Oct80—Run in Two Divisions: 7th & 9th Races.

10Oct80-7Crc	1 1/2-482	1:14 1:42 ft	31	114	44	41	43	12
8Sep80-9Crc	1 1/2-491	1:15 1:47 1/2 ft	6	116	52	63	1st	13
29Aug80-8Crc	6f-224	1:46 1:12 ft	7	118	87	69	515	514
20Aug80-8Crc	6f-222	1:46 1:13 1/2 ft	20	118	88	71	613	493
2Aug80-3Crc	6f-223	1:47 1:13 1/2 ft	22	117	99	99	32	2nd

2Aug80—Place first through disqualification.

23July80-5Crc	5f-23	1:46 1:53 1/2 ft	17	116	101	915	815	817
12July80-6Crc	5f-23	1:47 1:01 1/2 ft	28	116	911	811	65	64

Apr 22 Kee 3f: 36 1/2 h    Apr 16 Kee 1f: 1:42 h    Mar 27 Crc 3f: 37 1/2 h    Mar 21 Crc 1f: 1:43 h

### Proud Appeal X

**Own.—Winfield M H et al 126**

23Apr81-7Kee	1 1/2-472	1:11 1:51 1/2 ft	*1-26	121	13	1st	12	13
5Apr81-8Agu								



1981

C73-D

52

**Bold Ego**

Own.—Double B Ranch & Kidd J	126	Dk. b. or br. c. 3, by Bold Tactics—Coya's Ego, by Ballin	1981 5 3 0 0 \$205,990
11Apr81-90P	1 1/2 :47 1:11 1:50ft	Br.—Barton J D (NM)	1980 8 7 0 1 \$176,686
14Apr81-90P	1 1/2 :46 1:11 1:41ft	Tr.—Van Berg Jack	
28Feb81-90P	6f :21 46 1:11 1:41ft		
13Feb81-80P	6f :22 46 1:12 ft		
21Jan81-85A	6f :21 44 1:09 1/2 ft		
14Sep80-10A1b	6f :21 45 1:11 1/2 ft		
6Sep80-10A1b	6f :21 45 1:13 1/2 ft		
19Jly80-8H0l	6f :21 44 1:10 ft		
8Jun80-10Rui	4f :23 47 ft		
30May80-9Rui	4f :22 47 3/4 ft		
4May80-11Sun	5f :22 45 1/2 5/7 3/4 ft		
25Apr80-12Sun	5f :22 45 1/2 5/7 3/4 ft		
23Mar80-5Sun	4t :22 45 3/4 ft		
Apr 25 CD	1 1/2 ft :56 h	Apr 19 CD	7 ft :29 h
		Apr 4 OP	1 sy :42 b
		Mar 29 OP	7 sy :25 1/2 h

**Cure the Blues X**

Own.—Firestone B R	126	B. c. 3, by Stop the Music—Quick Cure, by Dr Fager	1981 3 1 1 1 \$47,004
18Apr81-9Aqu	1 1/2 :45 1:10 1:49 3/4 ft	Br.—Firestone B R Mr—Mrs (Va)	1980 5 5 0 0 \$131,102
5Apr81-8Aqu	1 :45 1:08 1:33 3/4 ft	Tr.—Jolley Leroy	
26Mar81-9Hia	7f :23 45 1:23 sy		
25Oct80-9Lrl	1 1/2 :46 1:11 1:44 1/2 sy		
13Oct80-9Bow	7f :22 44 1:23 1/2 ft		
13Oct80—Run in Two Divisions 8th & 9th Races.			
6Oct80-8Bow	6f :22 45 1:10 ft		
20Sep80-7Bow	7f :23 46 1:24 1/2 ft		
16Apr80-3Pim	5f :24 47 1:58 1/4 ft		
Apr 15 Aqu	5f :59 h	Apr 2 Aqu	4f :47 b
		Mar 25 Hia	2f :24 b
		Mar 19 Hia	6f :1:03 h

**Beau Rit**

Own.—Roussel Carole	126	B. g. 3, by Lord Rebeau—Rit-n-Rough, by Rough'n Tumble	1981 6 3 1 1 \$96,100
23Apr81-7Kee	1 1/2 :47 1:11 1:51 1/2 sy	Br.—Early Bird Stud (Fla)	1980 2 1 1 0 \$6,000
23Mar81-9FG	1 1/2 :46 1:11 1:50 1/4 ft	Tr.—Roussel Louie III	
14Mar81-9FG	1 1/2 :47 1:12 1:45 ft		
8Feb81-9FG	1 1/2 :47 1:12 1:46 1/4 ft		
25Jan81-9FG	1 1/2 :47 1:13 1:46 3/4 ft		
9Jan81-5FG	1 1/2 :48 1:14 1:42 1/4 ft		
24Dec80-4FG	6f :22 47 1:12 1/4 ft		
4Dec80-4FG	6f :22 48 1:11 1/2 ft		
Apr 22 Kee	3f :36 b	Apr 16 Kee	5f :1:00 1/2 h
		Mar 21 FG	5f :1:02 3/4 b
		Mar 13 FG	3f :38 b

**Television Studio**

Own.—Bwamazon Farm	126	B. g. 3, by Within Hail—Put on T V, by T V Lark	1981 2 0 0 1 \$2,560
25Apr81-7CD	1 :47 1:11 1:37 1/4 ft	Br.—Bwamazon Farm (Ky)	1980 11 3 2 3 \$101,106
3Apr81-6Kee	a7f :1:26 ft	Tr.—Basile Anthony	
22Nov80-8CD	1 1/2 :49 1:14 1:47 ft		
1Nov80-7CD	1 1/2 :49 1:14 1:48 1/4 ft		
21Oct80-4Kee	1 1/2 :48 1:14 1:48 1/4 ft		
21Oct80—Placed first through disqualification			
11Oct80-3Kee	1 1/2 :48 1:14 1:49 1/4 ft		
15Sep80-3AP	7f :23 47 1:29 1/4 ft		
18Aug80-5AP	6f :22 46 1:14 1/4 ft		
8Aug80-4AP	5f :22 46 1:05 1/4 ft		
21Jly80-3AP	5f :22 47 1:07 sy		
27May80-3AP	5f :22 45 1:57 1/4 ft		
16May80-3AP	5f :22 45 1:58 ft		
15Apr80-3Kee	4 1/2 f :22 46 1:52 gd		
Apr 20 Kee	6f :51 h	Apr 10 Kee	5f :1:05 1/2 b
		Apr 2 Kee	3f :36 b
		Mar 29 Kee	7f :1:30 b

**Tap Shoes**

Own.—Peters L & Hancock III et al	126	Ch. c. 3, by Riva Ridge—Gold Ballet, by Bold Bidder	1981 2 1 0 1 \$110,592
28Mar81-9Hia	1 1/2 :47 1:10 1:49 1/4 ft	Br.—Hancock A III & Peters L J (Ky)	1980 7 4 1 1 \$197,084
9Mar81-9Hia	7f :22 44 1:22 1/4 ft	Tr.—Luro Horatio A	
12Oct80-8Bel	1 :46 1:11 1:37 1/4 ft		
13Sep80-8Bel	7f :22 45 1:23 1/4 ft		
23Aug80-8Sar	6f :22 45 1:17 ft		
13Aug80-8Sar	6f :21 44 1:10 ft		
4Aug80-8Sar	6f :22 45 1:10 1/2 ft		
4Jly80-8Suf	5 1/2 f :22 46 1:05 3/4 ft		
18Jun80-6Bel	5 1/2 f :23 47 1:06 1/2 ft		
May 1 CD	4f :46 3/4 h	Apr 22 Kee	3f :39 1/4 b
		Apr 18 Kee	1 1/2 ft :45 3/4 h
		Apr 11 Hia	5f :1:01 b

**Wayward Lass**

Own.—Flying Zee Stable	121	Dk. b. or br. f. 3, by Hall the Pirates—Young Mistress, by Third Martini	1981 7 3 1 3 \$152,189
Entered 1May81- 8 CD		Br.—Luro H A (Fla)	1980 12 2 5 2 \$59,778
18Apr81-7Kee	1 1/2 :46 1:12 1:44 ft	Tr.—Martin Jose	1980 4 0 2 0 \$7,920
4Apr81-90P	1 1/2 :47 1:12 1:43 1/4 ft		
15Mar81-8Aqu	1 1/2 :47 1:12 1:43 3/4 ft		
15Feb81-8Aqu	1 1/2 :47 1:12 1:50 ft		
31Jan81-8Aqu	1 1/2 :47 1:12 1:43 1/4 ft		
17Jan81-7Aqu	1 1/2 :48 1:14 1:45 3/4 ft		
1Jan81-8Aqu	6f :22 45 1:11 1/2 ft		
7Dec80-8Aqu	6f :22 45 1:10 1/2 ft		
18Nov80-7Med	6f :22 47 1:12 1/2 ft		
1Nov80-8Key	6f :22 45 1:11 1/2 ft		
11Oct80-4Bel	6f :22 46 1:11 ft		
29Sep80-4Bel	6f :22 46 1:12 1/2 ft		
5Sep80-2Bel	1 1/2 :47 1:12 1:47 1/4 ft		
29Aug80-8Bel	7f :23 46 1:23 1/4 ft		
15Aug80-2Sar	1 1/2 :48 1:13 1:46 1/2 gd		
4Aug80-6Sar	1 :48 1:13 1:38 fm		
23Jly80-4Bel	7f :23 47 1:24 1/2 sy		
2Jly80-3Bel	5 1/2 f :22 45 1:05 1/4 ft		
23Jun80-4Bel	5 1/2 f :22 46 1:05 1/4 ft		
Apr 27 CD	6f :1:42 h	Apr 10 OP	5f :1:02 1/2 b
		Apr 2 OP	4f :48 b
		Mar 28 OP	6f :1:42 b

The starting status of the following horses was uncertain at press time.

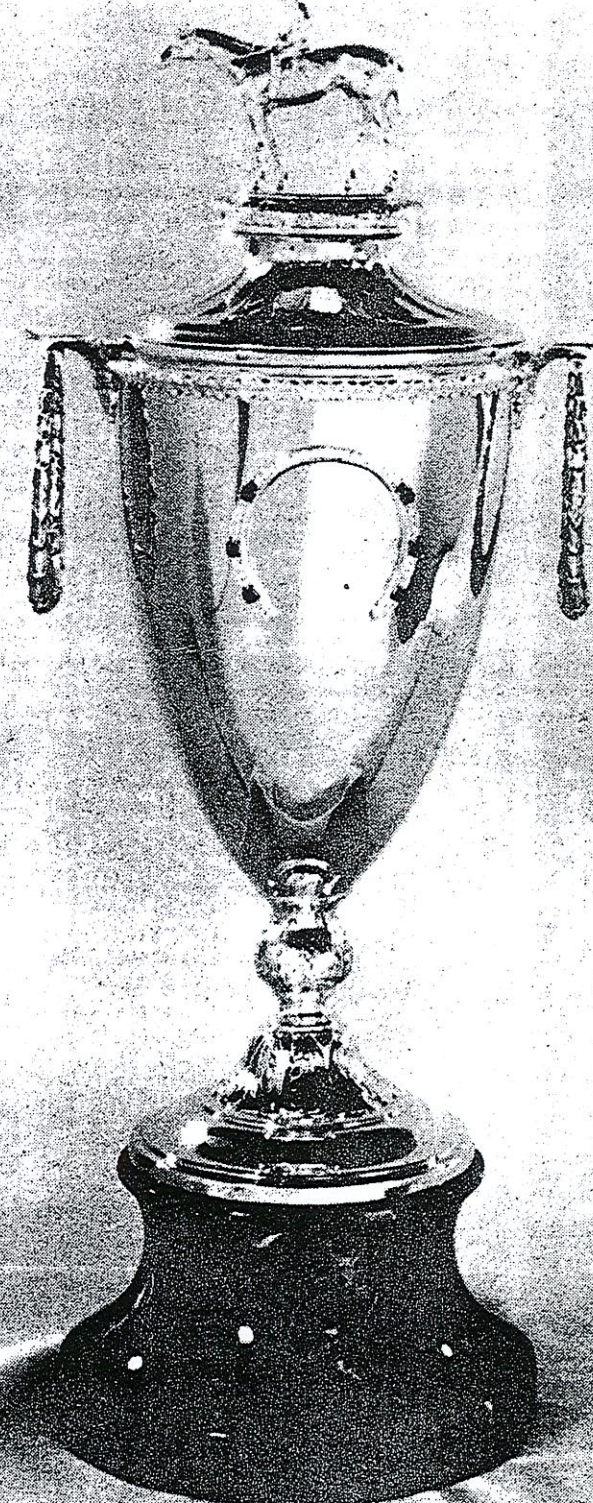
**Flying Nashua**

Own.—Digiulio & Holmn & Jnsn & Ronc	126	B. c. 3, by Nashua—Joys Will, by Yes You Will	1981 4 2 0 1 \$79,250
12Apr81-8SA	1 1/2 :45 1:10 1:49 ft	Br.—Freeman & Perkins (Ky)	1980 0 M 0 0
28Mar81-8SA	1 1/2 :46 1:10 1:42 ft	Tr.—Barrera Larry S	
11Feb81-8SA	7f :22 45 1:23 1/2 gd		
17Jan81-6SA	6f :21 44 1:09 ft		
Apr 29 CD	6f :1:32 h	Apr 21 CD	5f :1:02 1/2 h
		Apr 10 SA	3f :35 1/2 h
		Apr 4 SA	5f :58 1/2 h

**Mythical Ruler**

Own.—Risen Al Jr & Price Paxton	126	Ro. c. 3, by Ruritania—Our Nanny, by Victorian Era	1981 3 3 0 0 \$53,660
25Apr81-7CD	1 :47 1:11 1:37 1/4 ft	Br.—Penn O (Ky)	1980 5 3 1 1 \$17,520
28Mar81-8Lat	1 :46 1:11 1:38 ft	Tr.—Wirth Fred	
20Mar81-8Lat	1 :46 1:12 1:40 1/4 ft		
13Sep80-5Lat	6f :22 46 1:12 1/2 ft		
16Aug80-9EIP	6f :22 46 1:11 1/2 ft		
8Aug80-9EIP	5 1/2 f :22 46 1:06 1/2 ft		
26Jly80-3EIP	5f :22 46 1:58 1/4 ft		
3May80-1CD	5f :22 46 1:59 1/4 ft		
Apr 18 CD	6f :1:14 h		

AND TO THE WINNER . . .



KENTUCKY DERBY TROPHY

Next Stop... Saturday May 16

Hi Ho Pimlico! Preakness

106th Running / \$200,000 Added / First Race 12 Noon