

Badger Land

Table with columns for race dates, times, and names. Includes entries like 5Apr86-10Ha, 22Apr86-11Ha, 1Mar86-9GP, etc.

Table with columns for owner, trainer, and statistics. Includes 'Own.—Lukas-Lukas & Hatley', 'Tr.—Lukas D Wayne', and 'Lifetime 12 5 2 0 \$502,125'.

Wheatly Hall

Table with columns for race dates, times, and names. Includes entries like 19Apr86-9GP, 9Apr86-9GP, 28Apr86-7GP, etc.

Table with columns for owner, trainer, and statistics. Includes 'Own.—McKinnon J', 'Tr.—McKinnon John (Fla)', and 'Lifetime 4 2 2 0 \$118,300'.

Snow Chief *

Table with columns for race dates, times, and names. Includes entries like 6Apr86-55A, 6Apr86-55A, 1Mar86-3GP, etc.

Table with columns for owner, trainer, and statistics. Includes 'Own.—Grinstead & Rochelle', 'Tr.—Van Buren Jack C', and 'Lifetime 13 9 2 1 \$1,719,040'.

Bachelor Beau *

Table with columns for race dates, times, and names. Includes entries like 24Apr86-7Kee, 24Apr86-7Kee, 22Apr86-9Lat, etc.

Table with columns for owner, trainer, and statistics. Includes 'Own.—Waterfield & Tafel', 'Tr.—Hauswald Phillip', and 'Lifetime 9 3 4 1 \$231,367'.

Selections and Medications

Table with columns for TRACKMAN, HANDICAP, ANALYST, HERMIS, SWEEP, and CONSENSUS. Lists names like Broad Brush, Snow Chief, Mogambo, etc.

Information regarding horses running the the Kentucky Derby on medication was gathered through an unofficial survey of trainers conducted by Daily Racing Form.

Groovy *

Table with columns for race dates, times, and names. Includes entries like 19Apr86-8Au, 19Apr86-8Au, 5Apr86-8Au, etc.

Table with columns for owner, trainer, and statistics. Includes 'Own.—Ballis J A', 'Tr.—Crowell Howard', and 'Lifetime 9 2 3 1 \$246,467'.

Zabela

Table with columns for race dates, times, and names. Includes entries like 19Apr86-9GS, 19Apr86-9GS, 5Apr86-8Au, etc.

Table with columns for owner, trainer, and statistics. Includes 'Own.—Riordan M D', 'Tr.—Gosden John', and 'Lifetime 5 2 2 1 \$196,450'.

Fobby Forbes *

Table with columns for race dates, times, and names. Includes entries like 19Apr86-9GS, 19Apr86-9GS, 5Apr86-8Au, etc.

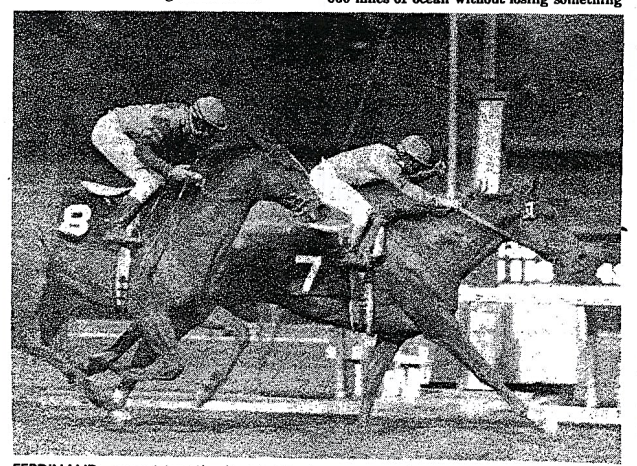
Table with columns for owner, trainer, and statistics. Includes 'Own.—Due Process Stable', 'Tr.—Garcia Carlos A', and 'Lifetime 8 4 0 0 \$263,470'.

Churchill Downs

Half of Derby Field Is Good Enough to Win

LOUISVILLE, Ky.—This is the most interesting Kentucky Derby in many years because half the field is good enough to win without occasioning much surprise.

The most intriguing aspect of the 112th Run for the Roses, however, is the presence in the starting field of England's Bold Arrangement. This is an incredibly audacious challenge, considering the expense, difficulty and time-consuming detail involved.



FERDINAND—promising Charlie Whittingham trainee shown in Santa Catalina win.

in the process. If Bold Arrangement were coming here for grass race, it would be a different matter, but he will be racing on dirt Saturday, a context in which he must still be making adjustments.

There is another aspect to his challenge that merits consideration. Most horses coming to the U.S. from foreign lands can and have run good races off the plane, but often their second race is not nearly as good.

Clive Brittain, who trains Bold Arrangement, has considered the program. It is a matter of some concern, but he feels the colt's two American races, only nine days apart, are sufficiently close to avoid a lapse.

Bold Arrangement came here seeking a fast pace as a counterpoint to his strong finish. He got a slow pace in the Blue Grass and still rallied smartly, prompting observers to wonder how much he might improve behind quicker fractions and with the seasoning of his debut.

If Bold Arrangement were to make a strong showing in the Kentucky Derby, it might well pioneer the way for similar ventures by other stables in years to come. The Derby would grow in stature, from a purely national event to an international race of character and significance.

Joe Hirsch

Who will win the Derby?

Who will win the Derby? So many factors affect the outcome. When Eternal Prince failed to break from a favorable post five last year, that incident changed the entire complexion of the race and made a gift of it to Spend a Buck, breezing alone on the lead.

The luck of the draw put the Derby's prodigious speed on the outside. An outside post often requires some use of one's horse to gain a position, and the run to the first turn should be extremely competitive.

Bold Arrangement is well-drawn from the number four post, and in the hands of the talented Chris McCarron, who has ridden some 4,300 winners in only 12 seasons of competition, he should be able to get a position from which to launch his rally.

Bold Arrangement is well-drawn from the number four post, and in the hands of the talented Chris McCarron, who has ridden some 4,300 winners in only 12 seasons of competition, he should be able to get a position from which to launch his rally.